

Xiaomi Smart Tower Fan User Manual .1



Safety Instructions Read this manual carefully before use, and retain it for future reference.

WARNINGS

Improper use may lead to electric shocks, fire, personal injury, or other damage.

- ⊗ This appliance can be used by children aged from 8 years and above and persons with reduced physical, sensory or mental capabilities or lack of experience and knowledge if they have been given supervision or instruction concerning use of the appliance in a safe way and understand the hazards involved. Children shall not play with the appliance. Cleaning and user maintenance shall not be made by children without supervision.
- ⊗ This appliance is not intended for use by persons (including children) with reduced physical, sensory or mental capabilities, or lack of experience and knowledge, unless they have been given supervision or instruction concerning use of the appliance by a person responsible for their safety.
- ⊗ Children should be supervised to ensure that they do not play with the appliance.
- ⊗ Ensure that the fan is switched off from the supply mains before removing the guard.
- ⊗ If the supply cord is damaged, it must be replaced by the manufacturer, its service agent or similarly qualified persons in order to avoid a hazard.
- ⊗ Under normal use of condition, this equipment should be kept a separation distance of at least 20 cm between the antenna and the body of the user.

-
- ⊗ Prior to cleaning or other maintenance, the appliance must be disconnected from the supply mains.
 - ⊗ Do not use this fan in a place where it will easily fall over or where there are other unstable objects nearby.
 - ⊗ Do not use this fan in hot and humid environments such as a bathroom.
 - ⊗ Do not use the fan if its power cord is damaged or its power plug is loose.
 - ⊗ Do not use the fan if its rear grille is not installed, becomes loose, or comes off.
 - ⊗ Do not allow children or adults who are incapable of operating this fan to use this product.
 - ⊗ Do not attempt to disassemble or repair this fan by yourself.
 - ⊗ Do not excessively pinch, bend, or twist the power cord as this may expose or break its core.
 - ⊗ Do not poke fingers or foreign objects into the grilles or the rotating fan blade.
 - ⊗ Keep hair and fabrics away from the fan to prevent them from being caught in the fan.
 - ⊗ Do not use any improper power outlet.
 - ⊗ Disconnect the fan from the electrical outlet before removing its rear grille.

Safety Instructions

Read this manual carefully before use, and retain it for future reference.

PRECAUTIONS

Installation

- ⚠ To avoid electric shocks, fire, personal injury, or other damage, make sure the fan is properly installed according to the instructions in this user manual.
- ⚠ Do not connect the fan to the electrical outlet until the fan is fully assembled.

Transportation

- ⚠ Turn off and unplug the fan before moving it.
- ⚠ When moving the fan, hold it steady to avoid damage to the fan itself or personal injuries caused by the fan falling down.

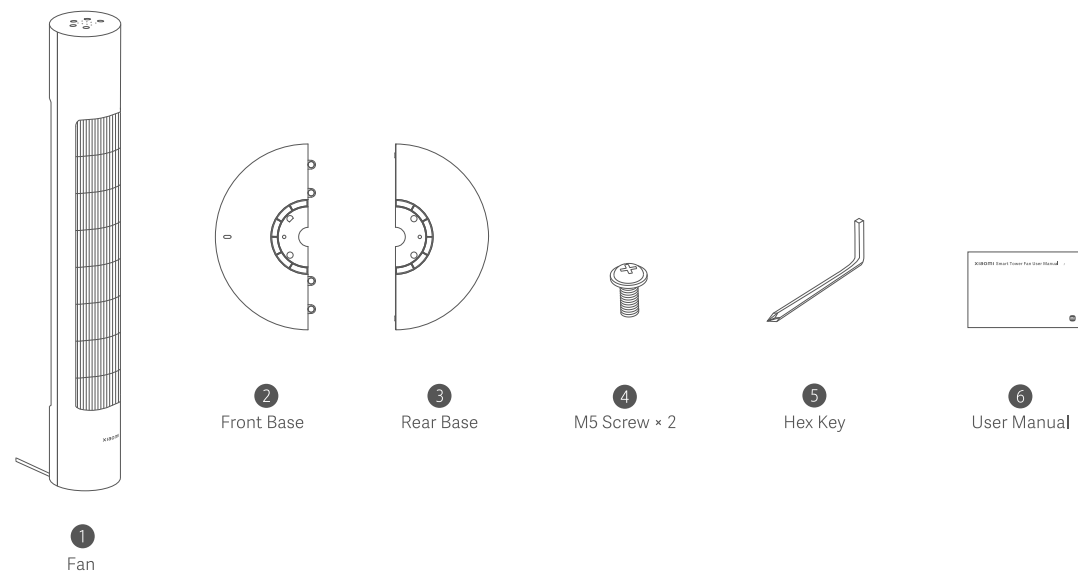
Using the Fan

- ⚠ Stop using the fan immediately if it makes unusual sounds, gives off odors, gets too hot, topples over, shakes, or has other errors.
- ⚠ Do not shake the fan manually so as to avoid damage to its internal mechanism.
- ⚠ Do not lean on or tilt the fan while it is running.

Power Cord

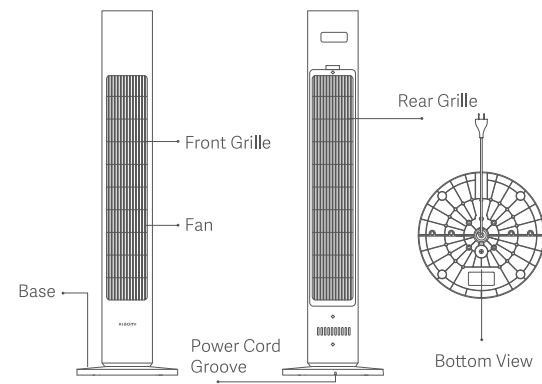
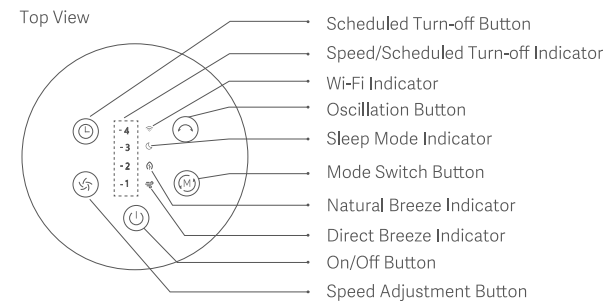
- ⚠ Disconnect the fan from the electrical outlet before maintaining or moving it.
- ⚠ Always unplug the fan by pulling the power plug rather than the cord.

Package Contents



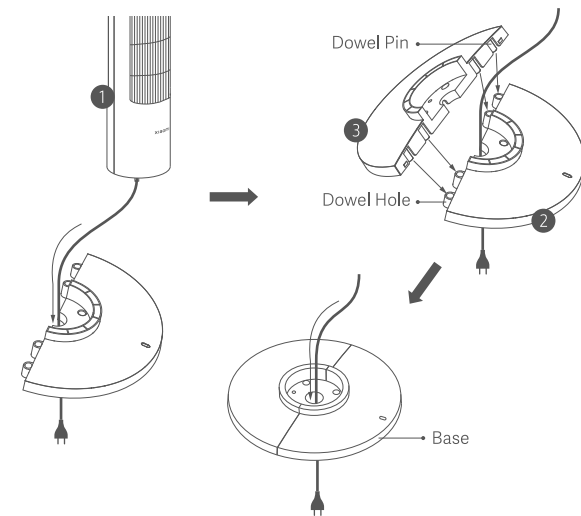
Note: Illustrations of the product, accessories, and user interface in the user manual are for reference purposes only. The actual product and functions may vary due to product enhancements.

Product Overview



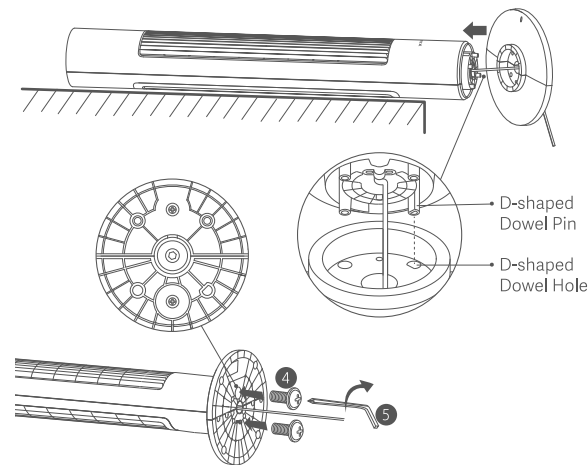
How to Install

Step 1: Assemble the base



1. Pass the power cord from the bottom of the ① fan through the round hole in the center of the base.
2. Align the dowel pins of the ③ rear base with the dowel holes of the ② front base and press them into place, so that the rear base and the front base are assembled into a flat one.

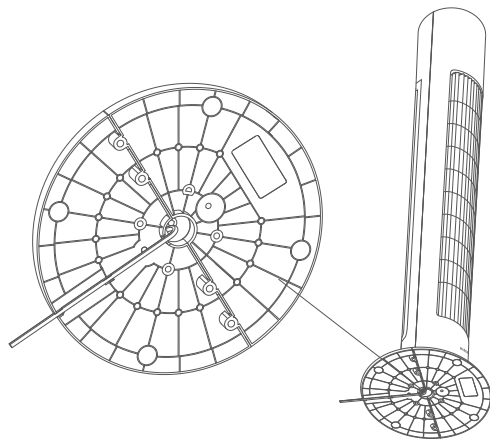
Step 2: Install the base



1. Place the fan horizontally on a soft surface. Then insert the D-shaped dowel pin at the bottom of the fan into the D-shaped dowel hole of the base, and press to install the base onto the fan.

2. Put two ④ M5 screws into the screw holes of the base and tighten the screws clockwise with the ⑤ hex key.

Step 3: Organize the power cord



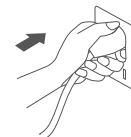
Install the power cord into the groove at the bottom of the base, and pass it through the end of the groove to complete the installation of the fan.

Note: Properly straightening out the power cord and installing it into the groove can help keep the power cord from breaking.



How to Use

Connecting to an electrical outlet


Plug the power plug into a suitable electrical outlet. When you hear a beep, the fan is successfully connected to the power.



Turning on/off

- Press the button  to start the fan. When turned on for the first time, the fan is at the direct breeze mode with speed 1, by default.
- Press the button  to stop the fan while it is running.


Switching the Speed

Press the button  to adjust the speed, and the corresponding speed indicators will light up (see table below). After the fan is turned off and turned back on again, the speed will be the last used one.


| Speed | Slow (1) | Medium (2) | Fast (3) | Turbo (4) |
|-----------|----------|------------|----------|-----------|
| Indicator | ★●●● | ★★●● | ★★★● | ★★★★ |

Note: ★ means the indicator is on; ● means the indicator is off.

Switching Mode


Press the button  to switch among the direct breeze, the natural breeze, and the sleep mode, and the corresponding indicator will light up. After the fan is turned off and turned back on again, the mode will be the last used one.

Setting the Oscillation

Press the button  to enable or disable oscillation. You can set the oscillation angle range in the app. After the fan is turned off and turned back on again, the oscillation setting will be the last used one. Unplug then plug the fan in or reset the Wi-Fi connection then turn on the fan, the fan will automatically oscillate its angle if enabling the oscillation function. The oscillation time varies depending on different angles, please wait with patience.

Note: When the Wi-Fi connection is reset, the oscillation angle range will change to the default angle of 90°.

Scheduled Turn-off

Press the button  to cycle through the scheduled turn-off times: 1 hour, 2 hours, 3 hours, 4 hours, and disabled, and the corresponding indicator(s) will light up (see table below). Five seconds after using the scheduled turn-off function, the indicator(s) resume to indicate the corresponding status of the current speed.

| Scheduled Turn-off | Disabled | 1 hour | 2 hours | 3 hours | 4 hours |
|--------------------|----------|--------|---------|---------|---------|
| Indicator | ●●●● | ★●●● | ★★●● | ★★★● | ★★★★ |

Note: ★ means the indicator is on; ● means the indicator is off.

How to Use

Connecting with Mi Home/Xiaomi Home App

This product works with Mi Home/Xiaomi Home app *. Control your device, and interact it and other smart home devices with Mi Home/Xiaomi Home app.

Scan the QR code to download and install the app. You will be directed to the connection setup page if the app is installed already. Or search "Mi Home/Xiaomi Home" in the app store to download and install it. Open Mi Home/Xiaomi Home app, tap "+" on the upper right, and then follow prompts to add your device.

* The app is referred to as Xiaomi Home app in Europe (except for Russia). The name of the app displayed on your device should be taken as the default.

Note: The version of the app might have been updated, please follow the instructions based on the current app version.



33AABD33



Connecting to Wi-Fi

Simultaneously press and hold the buttons and . Once you hear a long beep, the fan is awaiting a connection, then you can pair it with a device via the app.

Wi-Fi Status & Indicator Description:

| Wi-Fi Status | Awaiting Connection | Connecting | Connected | Fail to Connect |
|--------------|---------------------|---------------|-----------|-----------------|
| Indicator | Blinking orange | Blinking blue | Blue | Orange |

Resetting Wi-Fi Connection

Simultaneously press and hold the buttons and . Once you hear a long beep, the Wi-Fi connection has been reset successfully and then the fan is awaiting a connection. The Wi-Fi connection needs to be reset on the circumstances listed below:

- The Xiaomi account that the fan is paired with has been changed.
- The router that the fan is connected to has been changed.
- The account or password of the router that the fan is connected to has been changed.
- The Mi Home/Xiaomi Home app is unable to control the fan.

Enabling/Disabling Wi-Fi

Simultaneously press and hold the buttons and for seven seconds until you hear a notification sound, and then the Wi-Fi is enabled or disabled.

Child Lock Function

To disable the function of child lock, go to the page of Xiaomi Smart Tower Fan in the Mi Home/Xiaomi Home app, or simultaneously press and hold the buttons and until you hear a long beep.

Note: Resetting the Wi-Fi connection or unplugging and plugging in the fan again can also disable this function.

Care & Maintenance

Washable Parts: Rear Grille & Fan Blade



Rear Grille



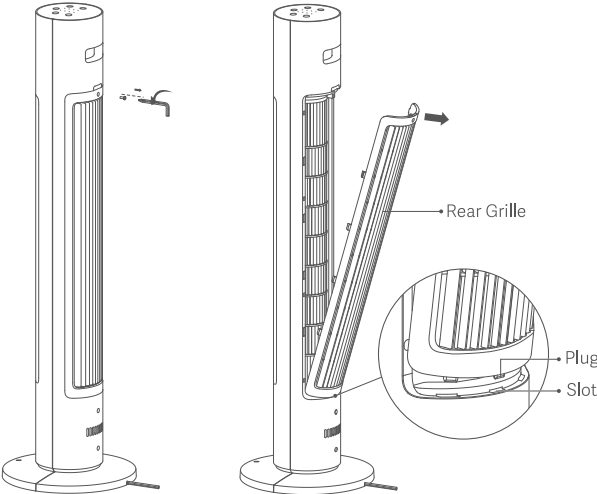
Fan Blade

After the rear grille and the fan blade are removed, you can clean these parts with a soft cloth or a sponge using water or dilute neutral detergent.

⚠ Notes:

- Make sure the fan is turned off and unplugged before disassembling or cleaning.
- After cleaning, make sure all parts are completely dry before installing them and using the fan again. Do remember to avoid direct sunlight.
- Do not use thinner, gasoline, acidic detergent, or alkaline detergent to clean the parts.

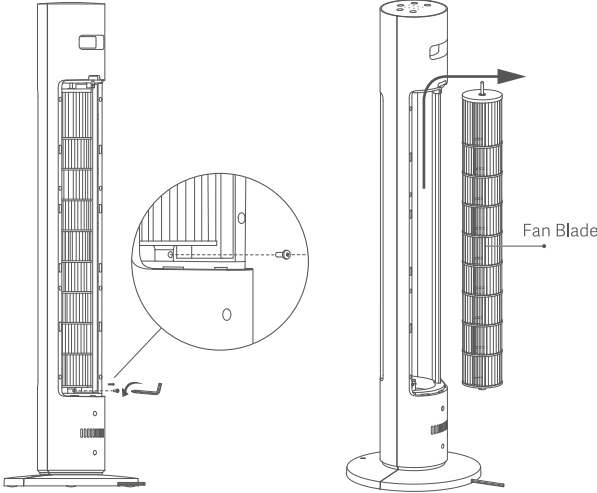
Removing the Rear Grille



1. Use the hex key to counterclockwise turn the screw that secures the rear grille to remove it.
2. Pull the rear grille outwards from the indentation at the top of the rear grille to remove it.

Note: When installing the rear grille back, first insert the plugs at the bottom of the rear grille into the slots of the rear shell, and then clicks the rear grille into place from the bottom to the top.

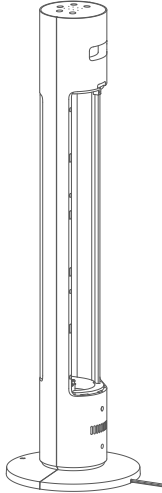
Removing the Fan Blade



1. Use the ⑤ hex key to turn the screw at the bottom of the fan blade counterclockwise to remove it.

2. Push the fan blade upward against the top of the compartment, and then pull it outward to remove it.

Non-washable Parts: Fan & Power Cord



Use a soft, dry cloth to gently wipe the fan and the power cord.

⚠ Note: Do not use water or other liquids to clean any parts, except for the rear grille and the fan blade.

Troubleshooting

| Fault | Possible Cause | Solution |
|--|---|--|
| The fan does not work. | The fan is not connected to the power. | Connect the fan to an electrical outlet that meets the fan's requirements. |
| | The rear grille is not properly installed. | Install the rear grille properly. |
| | The fan and the base are not properly installed together. | Install the fan and the base properly together. |
| | Child lock is enabled. | Disable the child lock function. |
| The fan is unable to connect to Wi-Fi. | The Wi-Fi connection is 5 GHz. | Connect to a 2.4 GHz Wi-Fi network. |
| | The fan has been offline for more than half an hour. | Resetting Wi-Fi Connection. |
| The fan blade is stuck. | The fan blade is stuck by foreign objects. | Unplug the fan and remove foreign objects. |
| The fan makes unusual sounds when oscillating. | When turned on for the first time, the fan will search for the furthest position to which it can oscillate. | This is normal. The fan will stop making unusual sounds when it has confirmed the furthest position to which it can oscillate. |
| The oscillation function does not work. | The fan is under the auto-oscillation state. | Wait for the auto-oscillation completes. It will last for 14 seconds at most. |

Specifications

| | | | | | |
|--|------------------------|-------------------|------------|-----------------------|--------------------------------|
| Name | Xiaomi Smart Tower Fan | Rated Voltage | 100–240 V~ | Power Cord Length | 1.6 m |
| Model | BPTS01DM | Rated Frequency | 50/60 Hz | Wireless Connectivity | Wi-Fi IEEE 802.11b/g/n 2.4 GHz |
| Type | Tower Fan | Rated Power | 22 W | Item Dimensions | 310 × 310 × 1111 mm |
| Gross Weight | 5.5 kg | Net Weight | 4.3 kg | Noise Emission | ≤63 dB(A) |
| * Radio Frequency and Radio Transmission Power | | | | | |
| RF Specification | | Working Frequency | | Maximum Output Power | |
| 2.4 G Wi-Fi | | 2412–2472 MHz | | <20 dBm | |

| | |
|--|--|
| Product Information Requirements | Test Data |
| Maximum Fan Flow Rate (F) | 36.98 m³/min |
| Fan Power Input (P) | 16.8 W |
| Service Value (SV) | 2.20 (m³/min)/W |
| Maximum Air Velocity (c) | 2.63 meters/sec |
| Measurement Standard for Service Value | EN IEC 60879:2019 |
| Standby Power Consumption (PSB) | Without Wi-Fi connection: 0.265 W With Wi-Fi connection: 0.671 W |
| Fan Sound Power Level (LWA) | 57.8 dB(A) |
| Seasonal Electricity Consumption (Q) | 6.128 kWh/a |
| Contact Details | Zhejiang Xingyue Electric Equipment Co., Ltd. South Side, 24th Floor, Jinpin Building, Headquarters Center, Yongkang City, Zhejiang Province, China |

Regulatory Compliance Information

Europe —EU declaration of conformity



Hereby, Zhejiang Xingyue Electric Equipment Co., Ltd. declares that the radio equipment type BPTS01DM is in compliance with Directive 2014/53/EU. The full text of the EU declaration of conformity is available at the following internet address:
<http://www.mi.com/global/service/support/declaration.html>

Disposal and recycling information



All products bearing this symbol are waste electrical and electronic equipment (WEEE as in directive 2012/19/EU) which should not be mixed with unsorted household waste. Instead, you should protect human health and the environment by handing over your waste equipment to a designated collection point for the recycling of waste electrical and electronic equipment, appointed by the government or local authorities. Correct disposal and recycling will help prevent potential negative consequences to the environment and human health. Please contact the installer or local authorities for more information about the location as well as terms and conditions of such collection points.

For detailed e-manual, please go to www.mi.com/global/service/userguide