



Joyful Kids · Joyful Trip



www.jovikids.com



[jovikids_global](https://www.instagram.com/jovikids_global)



service@jovikids.com

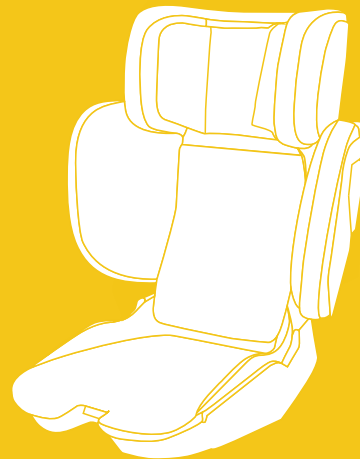
Model WD042

All rights reserved @2024 JOVIKIDS. JOVIKIDS and all associated logos are trademarks.
All product specifications are correct at time of print.
JOVIKIDS reserves the right to change anything at any time without prior notice.
Color representation is as close as processes allow.



USER MANUAL

ROBER i-Size



Approx.

3^Y-12^Y

100-150cm





EN Scan for user manual

DE Scan für Benutzerhandbuch

FR Scannez pour le manuel d'utilisation

IT Scansiona per il manuale utente

ES Escanear para el manual del usuario

JP QRコードをスキャンして説明書を表示します

AR يحاشر ليل ايلحلح لسم

RU сканируйте для руководства пользователя

•

•

•

CONTENTS

Content	1
Introduction	2
Important Information	3-4
Know Your Car Seat	5-6
Car Seat Version	7
Suitability	8
Use in the Vehicle	9-10
Securing Your Baby	11-13
Regulating the Headrest	11
Use the ISOFIX Attachment	11
Folding the Seats	12
Chair Body Angle Adjustment	13
Installation in the Vehicle	14-17
Installation Instruction for Stature 100-150cm	
ISOFIX Attachment + 3-Point-Belt	14-15
Installation Instruction for Stature 100-150cm, 3-Point-Belt	16
Removing the Seat	17
Care Instructions	18-19
Cleaning	18
Security Checking	18
Warranty	19

INTRODUCTION

Dear Parents,

Thank you very much for purchasing our product.

The functions and design of this car seat offer safety and comfort when your child is in this child restraint.

In order to use safely, please adjust the child restraint till it is suitable for your child.

Please take care to use this car seat and read the instruction manual carefully.

Research shows that a high number of car safety seats are incorrectly installed.

Therefore, please take the time to read through the instruction manual carefully.

Our product offers maximum safety only when it is used in accordance with the instructions.

Continuous research by our development team, user tests and consumer reactions ensure that we are kept fully up to date in the field of child safety.

Therefore, if you have any questions concerning use of our product, please do not hesitate to contact us.

You can see our contact information on our website.



IMPORTANT INFORMATION

WARNING

- Read this instruction manual carefully.
 - The correct fitting of the ISOFIX and top tether anchoring systems is of vital importance for the safety of your child.
 - For the future using of the seat, it is important that you keep the instruction manual carefully.
 - Never leave your child unattended in the car.
 - Do not use a child safety seat if the vehicle seat is equipped with a front airbag. This can be dangerous. This does not apply to side airbags.
-
- Before use our product, please read the instruction manual carefully, the product is a safety product and is only safe when used in accordance with the instruction manual.
 - The product must only be used on a forward facing seat that is fitted with the ISOFIX attachment.
 - The product may be used on either the back seat. However, we recommend that it is fitted on the back seat.
 - The product has been approved according to the strictest European safety standards(R129/03) and is for stature 100-150cm,ISOFIX attachment +Vehicle 3-point-belt and is for 100-150cm Vehicle 3-point-belt.
 - After an accident the seat may become unsafe due to damage that is not be noticeable immediately. It should therefore be replaced.
 - The safety of the seat can only be guaranteed by the manufacturer if it is issued by the original owner.
 - We strongly advise that you do not to use a second-hand car seat, because you are not know if it is in good condition.
 - Ensure that all luggage and objects likely to cause injury in the event of an accident are properly secured.
 - Do not use this child seat in passenger seats that are equipped with airbags.
- It is recommended that the car seat should not be used more than 5 years from the date of production. The performance of the product may deteriorate, such as the plastic aging, which may not be visible.

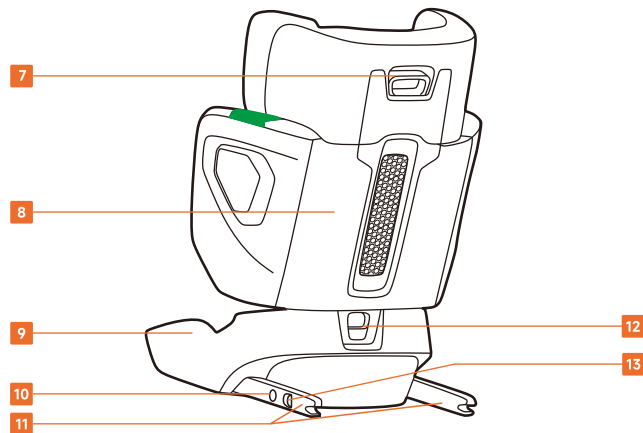
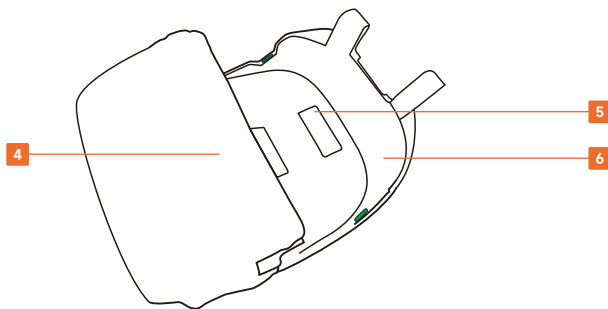
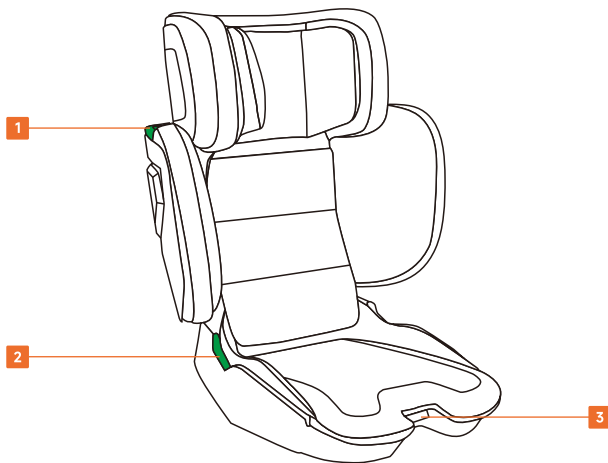
- The baby car seat must not be used without the cover. Please use an original cover, as the cover contributes to the safety of the seat. The seat must be secured with a seat belt or ISOFIX attachment even when it not on use.
- An unsecured seat may injure other passengers in the care in an urgent stop.
- The rigid items and plastic parts of a child restraint must be located and installed that they are not liable, during everyday use of vehicle, to become trapped by a movable seat or in door of the vehicle.
- Ensure that the seat is not damaged by heavy luggage, adjustable seats or slamming the car door etc.
- No alterations may be made to the product as this could affect part or the overall safety of the seat.
- In hot weather the plastic and metal parts of the product will become hot. You should cover the seat when the car parked under the sun.
- In order to prevent damage to the cover, do not remove the product's logo.
- Before the purchasing, please check that the seat is properly secured in your car.
- Take a short break during long journey. So that your child has some time for the relaxation.
- Set a good example yourself and always wear your seat belts.
- Tell your child that they should never play with the harness buckle.
- Any straps holding the restraint to the vehicle should be tight, that any straps restraining the child should be adjusted to the child's body, and that straps should not be twisted.
- Ensuring that any lap strap is worn low down, so the pelvis is firmly engaged.
- This product can not be used any more when it has been subject to violent stresses in an accident.
- Children can not be left in the product unattended.

Questions

Contact your supplier or retailer if you wish to make a warranty claim or have any other questions.

Your car seat can be fixed safely on almost seats of the cars. However, the belts of some seats are fixed so that proper installation is not possible, in that case, try another seat.

KNOW YOUR CAR SEAT



1. Shoulder Guide Hook
2. Waist Belt Guider
3. ISOFIX Attachment Release Button
4. The Base Cloth
5. Manual Slot
6. Base
7. Height Adjusting Button
8. Chair Body
9. Base
10. ISOFIX Attachment Dual Lock Button
11. ISOFIX Attachment
12. Folding Button
13. ISOFIX Attachment Release Button

CAR SEAT VERSION

1. Product Description:

Type	Stature	Facing Direction	Installation	Approval Type
WD042	100-150cm	Forward	Vehicle 3-Point-Belt	i-Size Booster Seat
		Forward	Vehicle 3-Point-Belt +ISOFIX Attachment	

SUITABILITY

2. Certification



...as a child safety seat installed a vehicle

ECE = European Standard for Safety Equipment

The child safety seat has been designed, tested and certified according to the requirements of the European Standard for Child Safety Equipment(ECE R129/03).

The seal of approval E (in a circle) and the approval number are located on the approval label(sticker on the child safety seat).

This approval will be invalidated if you make any modifications to the child safety seat. Only the manufacturer is permitted to make modifications to the child safety seat.

USE IN THE VEHICLE

3. Use in The Vehicle

WARNING

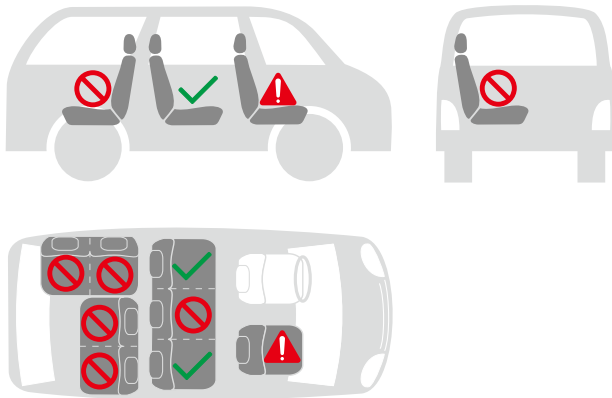
Airbag is installed.

An active frontal airbag may cause death or seriously injury of your child in an accident.

Please read the instructions carefully and keep them in the future.

There is an instructions compartment in the back of the child car seat for storage of the instructions manual.

You Can Use Your Child Car Seat as Follows.



WARNING

Never use the child car seat without it's fabric cover.

The fabric cover should not be replaced with any other than the ones recommended by manufacturer. The fabric cover will affect the integral performance of the baby/child restraint system.

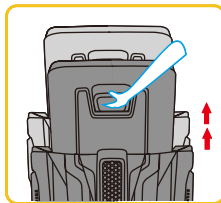
Never try any other force points than the indicated, the main force points of this product are the ISOFIX attachment adapter .

- Always secure your baby in the car seat using the harness or belts.
- Never leave your baby unattended in the car seat when placing it on elevated surfaces (e.g.a table, nappy changing unit, etc.).
- Never allow the strap end to become caught in moving parts (e.g. automatic doors, escalators,etc.).
- Caution! The plastic parts of the car seat heat up in the sun, so that your baby may get burnt. Protect your baby and the car seat against intensive solar radiatin (e.g. by putting a light cloth over the seat).
- Take your baby out of the car seat as often as possible to relieve its spine. We recommend taking frequent breaks during long journeys. Even outside of the car, please avoid leaving your baby in the car seat for too long.

SECURING YOUR BABY

4.1 Regulating the Headrest

Pull up the adjustment button to adjust the height of the headrest.



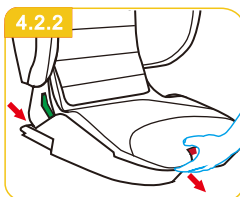
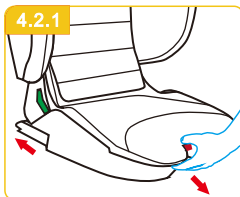
CAUTION

Before installing the car seat, please adjust the height of the car seat to fit your child.

There are 8 adjustable chair height positions. When using, please adjust the head height to the child's shoulder position. If the child's shoulder is in the middle of two height settings, please use the higher setting.

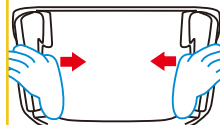
4.2 Use the ISOFIX Attachment

Pull the ISOFIX attachment adjustment handle outward, and ISOFIX attachment will automatically fully extend. While pulling the ISOFIX attachment regulating handle outward, it can push the ISOFIX attachment inward and retract the ISOFIX attachment.

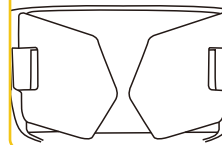


4.3 Folding the Seats

4.3.1

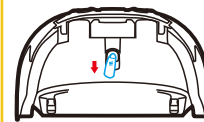


4.3.2

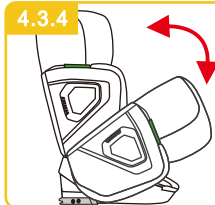


Please turn your head inward. Press the folding button of the chair body to fold the seat.

4.3.3



4.3.4

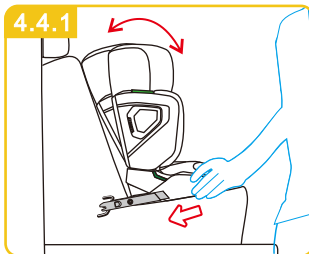


SECURING YOUR BABY

4.4 Chair body Angle Adjustment

Pull the ISOFIX attachment adjustment wrench outward and push the seat inward at the same time.

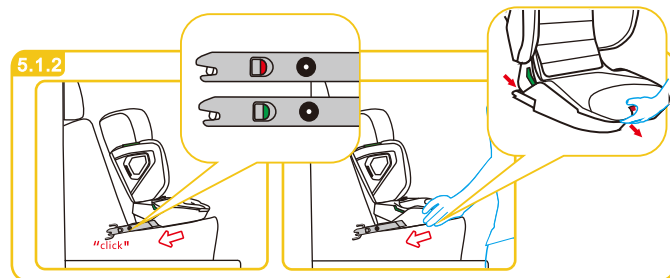
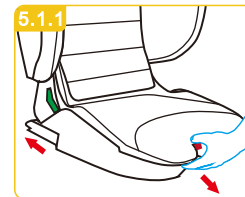
For each step forward of ISOFIX attachment, the angle of car seat will automatically move one step outwards.



INSTALLATION IN THE VEHICLE

5.1 Installation Instruction for Stature100-105cm, ISOFIX + 3-Point-Belt

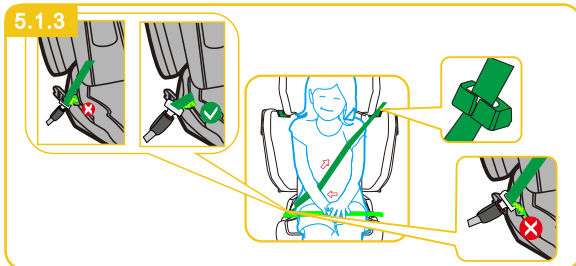
Pull ISOFIX attachment release button, extend ISOFIX attachment.



Push the ISOFIX attachment directly onto the ISOFIX anchor point on the car seat until you hear two audible "click" sound (please check the red and green indicator on ISOFIX attachment red to indicate incorrect installation and green to indicate correct installation). Then pull the ISOFIX attachment handle and push the seat inwards.

INSTALLATION IN THE VEHICLE

5.1.3



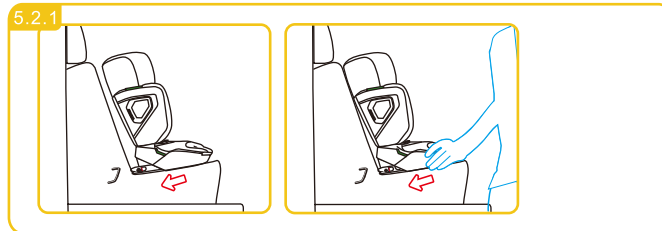
With the child in the car seat, position the vehicle belt in front of the child and lock the seat belt buckle into the vehicle until you hear an audible "chick" sound. Check that the belt buckles is secure and then pass the should belt into the should belt hook.

CAUTION

Make sure strap lap is worn low down, so that the pelvis is firmly engaged. Pull on the strap until it lies flat and is close against your child's body. The straps should be correctly adjusted and ensure they are not twisted.

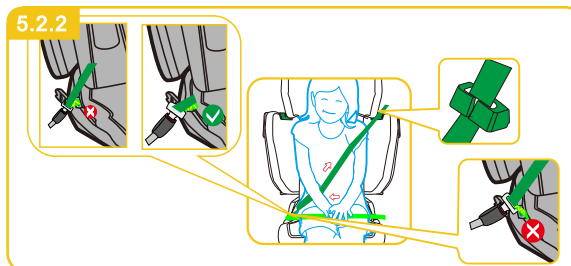
5.2 Installation Instruction for Stature 100-150cm, 3-Point-Belt

5.2.1



Place the child safety seat on the car seat and push the seat tightly.

5.2.2

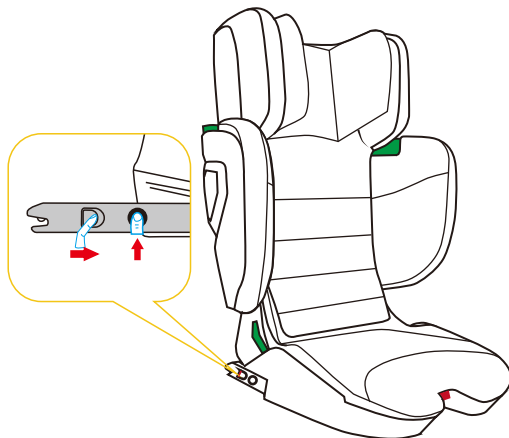


With the child in the car seat, position the vehicle belt in front of the child and lock the seat belt buckle into the vehicle until you hear an audible "chick" sound. Check that the belt buckles is secure and then pass the should belt into the should belt hook.

CAUTION

Make sure lap belt is worn low down, so that the pelvis is firmly engaged. Pull on the belt until it lies flat and is close against the child's body. The belts should be correctly adjusted and ensure they are not twisted.

6. Removing the Seat



If the ISOFIX attachment is to be released when the seat is to be removed, the ISOFIX attachment release button must be pulled backward by something holding down the two-channel lock switch to unlock the ISOFIX attachment.

CARE INSTRUCTIONS

6.1 Cleaning

Please be sure to use only original cover, as the cover is quite important for the secure operating system. Replacement seat cover are available from your retailers, agents or manufacturers. The baby car seat must not be used without the cover.

The cover can be removed and washed circularly in a washing at 30°C in the neutral detergent.

But please read the washing label on the cover carefully before washing. As the color of the cover may fade if washed above 30°C. Wringing or ironing the cover is forbidden (as the fabric may separate from the padding).

The plastic part of the seat can be cleaned with soapy water. Do not use the strong detergents (such as solvents).

The harness belt can be cleaned with soapy water. But do not remove the socket of the buckle from the shoulder strap.

6.2 Security Checking

For security, please read this "security checking" before your traveling.

Check if the firmness of the shoulder strap system is suitable for your child, and if the height of the shoulder strap is with the proper height.

Regularly check the 5-point harness belt of the seat to ensure no damage. In case of any damage or malfunction, please do not use the baby car seat and contact your supplier (see the address information on the warranty card).

If you have any question, please contact the supplier.

CAR INSTRUCTIONS

6.3 Warranty

The warranty period starts from the purchase date and is valid for a period of 12 months.

The warranty is only applicable to the original owner and is not transferable.

The warranty is only applicable to products which have not been modified by the user.

In the case of any defects, the owner is required to return the product to the retailer.

If the retailer can't solve the problem, he must return the product, complete with a clear description of the complaint and a validated purchase receipt to the manufacturer.

Repairs do not constitute an extension to the warranty term.

No warranty given if:

The product is not supplied completely with the validated purchase receipt to the manufacturer.

Defects are caused by misuse or maintenance which differs from that indicated in the instruction manual.

Repairs are carried out by third parties.

Defects are caused by neglect.

Damage or removal of any serial number is found.

If there is normal wear and tear which may be expected in daily use.

The stated warranty terms and conditions have not been satisfied.