

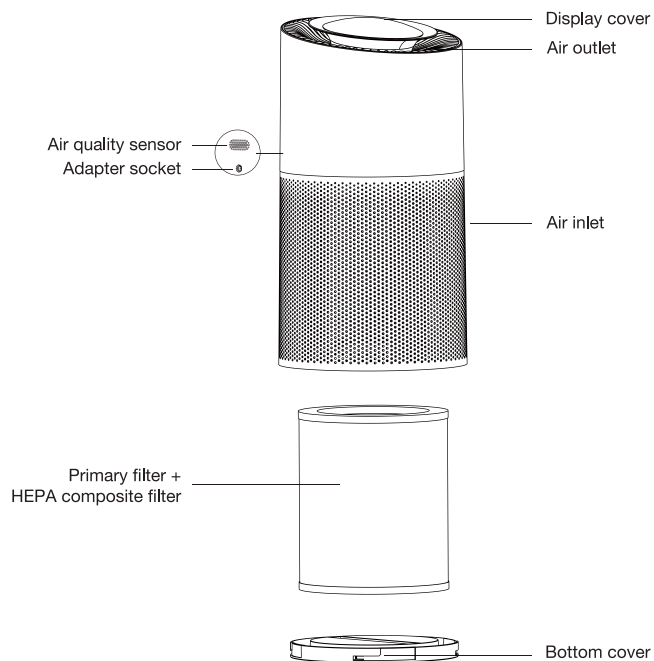
USER MANUAL

AIR PURIFIER BULMA PRO

공기 청정기 / 100-240V / 50-60HZ / 45W

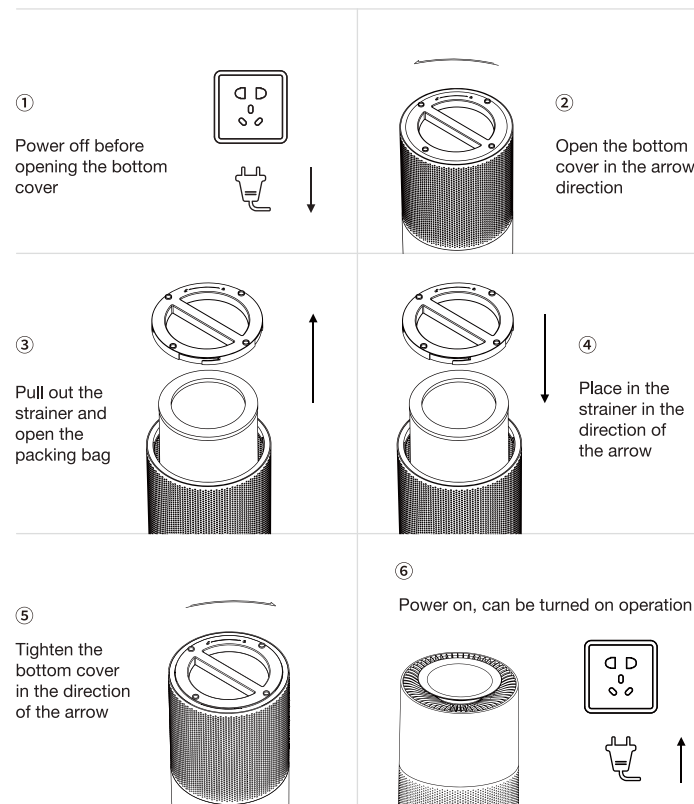
Please read this manual carefully before use and keep properly

1 PRODUCT DESCRIPTION

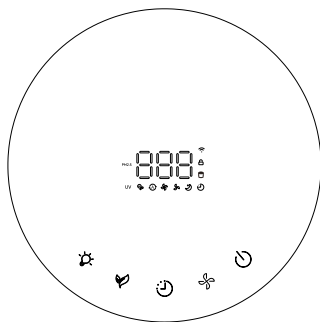
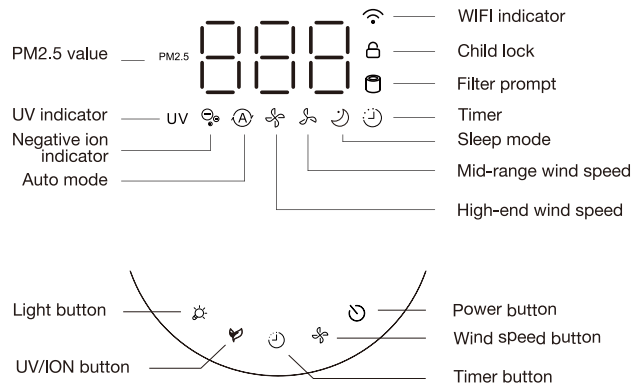


*The actual product in the packaging shall prevail.

2 FILTER INSTALLATION INSTRUCTIONS



3 OPERATION DESCRIPTION



UV indicator: UV The indicator icon lights up and the UV mode is turned on.

Negative ion indicator: The indicator icon lights up and the negative ion mode is turned on.

Auto mode: The indicator icon lights up, the auto mode is turned on, and the machine will adjust the wind speed according to the air quality.

High-end wind speed: The indicator icon lights up, the auto mode is turned on, and the machine will adjust the wind speed according to the air quality.

Mid-range wind speed: The indicator icon lights up and the mid-range mode is turned on.

Sleep mode: The indicator icon lights up, the sleep mode is turned on, the machine runs in low gear, and the screen turns off if there is no operation for 5 seconds.

Timing mode: The indicator icon lights up and the timing mode is turned on.

Filter prompt: The indicator light is always on, indicating that the filter is not installed properly. The indicator light flashes to indicate that the filter life has expired. After replacing the new filter, long press the timer button for 7 seconds to clear the filter prompt.

Child lock mode: Press and hold the button for 2 seconds to enter child lock mode, then press and hold for another two seconds to unlock.

WiFi mode: Press and hold the button for 5 seconds to enter network distribution mode. The icon flashes to indicate that the connection is being made; the icon to stays on indicates that the double-click is successful.

4 WIFI OPERATION

Download & Registration

1. Scan the QR code to download "Smart Life" APP. You can also search "Smart Life" in either APP store or Google Play to install the APP. Open the "Smart Life" APP. Tap "Register" to register a "Smart Life" account with your phone number or e-mail. Then sign in the APP.



Add Devices in Easy Mode(Recommend)

- 1. Make sure your smart device is energized and your mobile phone is connected to your WiFi network. If the WiFi indicator of smart device keeps flashing to indicate that the smart device enters the mode of configuring the mobile phone; if not, please press the Timer button for more than 5 seconds, after hearing the smart devices "beep", then loose it and this means the device is already for configuration.
- 2. Open your "Smart Life" APP and tap "+" on the top right of the APP. Select type of service device, tap "All devices" and turn to " Add Device", then automatically fetch the password of the WiFi interwork that your mobile phone connects to. Then tap "OK" to connect to the device.
- 3. When appearing "Successfully added 1 device", it means the connection is complete and your device will be listed in your APP list.

Add Devices in AP Mode

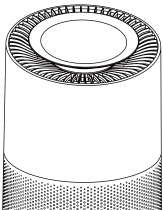
- 1. If failed in Easy Mode, users could also add devices in AP Mode.
- 2. Press the Timer button for more than 5 seconds until hearing "beep" and the WiFi indication light begin to flash quickly,then press the Timer button for another 5 seconds until haring "beep" and the indicator light begin flash slowly, this means the device is already for configuration in the AP Mode.
- 3. Tap "+"on the top right of the APP. Select Device Type and tap it. Then select "AP Mode" on the top right of the APP. Tap "Connect now" to go to the WLAN Settings interface in your mobile phone and select the WiFi network named "Smart Life XXXX" to connect it.
- 4. Return to the "Smart Life" APP,the connection will start automatically.
- 5. When appears "Successfully added 1 device", it means the connection is complete and your device will be listed in your APP list. Now you can control your smart device via your mobile phone APP anytime and anywhere(Make sure your mobile phone and smart device are all connected to the network, and to change the router name into Smart Life XXX).

5 PRODUCT PARAMETER

Product name	Air purifier	Rated voltage	24V
Model No.	Bulma Pro	Rated power	45W
Product size	272x272x513mm	Adapter input voltage	100-240V
Product net weight	3.38kg	Adapter frequency	50/60Hz
Noise	56dB	Adapter output voltage and current	24V-2A

6 AIR MONITORING

- Air quality light



Green	Orange	Red
Good	Normal	Bad
0-12 µg/m³	13-35µg/m³	>35µg/m³

PM2.5 numerical table

Experts point out that particulate matter with a particle size between 2.5 microns and 10 microns can enter the upper respiratory tract, but some of it can be excreted through sputum, etc., which poses relatively little harm to human health; while fine particles with a particle size below 2.5 microns, Its diameter is less than 1/20 of the thickness of a human hair. After being inhaled into the human body, it will enter the bronchial tubes, interfere with the gas exchange in the lungs, and cause diseases including asthma, bronchitis, and cardiovascular disease. These particles can also enter the blood through the bronchi and alveolar, and the harmful gases and heavy metals in them are dissolved in the blood, causing greater harm to human health.

7 FAULT DESCRIPTION

If your air purifier is not working properly, please perform the following checks before requesting repair service:

Fault phenomenon	Cause Analysis	Method of exclusion
Power Indicator light is off	The power cord is not plugged in properly or the product is faulty.	Check whether the power cord is connected normally. If it still cannot work, please contact after-sales service for product repair or replacement.
Air purifier operating noise is too loud	If the position is uneven or the filter tape has not been removed, please readjust it to a flat position and confirm that the filter tape has been removed.	Check whether the power cord is connected normally. If it still cannot work, please contact after-sales service for product repair or replacement.
The air volume of the equipment is significantly reduced.	There are foreign objects blocking the air outlet/inlet or the foreign objects are not removed in time when the filter is replaced. Verify whether the filter is replaced according to the prompts.	Check whether the power cord is connected normally. If it still cannot work, please contact after-sales service for product repair or replacement.
Filter warning light flashes	There are foreign objects blocking the air outlet/inlet or the filter is not replaced in time.	Remove foreign matter and verify whether the filter is replaced according to the prompts.

8 ENVIRONMENTAL CHECKLIST

1. This product meets the requirements of the "Administrative Measures for the Restriction of the Use of Hazardous Substances in Electrical and Electronic Products".
2. Within the environmentally friendly use period, consumers will not experience problems such as leakage or precipitation of harmful substances that affect consumer health during normal use, and can use it with confidence.
3. The environmental protection use period of our products is 10 years. The "environmental protection use period is valid" only when the product is used under normal conditions as described in this manual.

Name and content of toxic and harmful substances or elements in the product:

Part names	Hazardous material part names					
	Lead (Pb)	Mercury (Hg)	Cadmium (Cd)	Polybrominated biphenyls (PBB)	Polybrominated biphenyls (PBB)	Polybrominated diphenyl ethers (PBDE)
Plastic assembly	○	○	○	○	○	○
Hardware component	X	○	○	○	○	○
Board assembly	X	○	○	○	○	○
Power line assembly	X	○	○	○	○	○

This form is prepared in accordance with the provisions of SJ/T 11364

- O: Indicates that the content of the hazardous substance in all homogeneous materials of the part is below the limit requirements specified in GB/T 26572-2011.
- X: Indicates that the content of the hazardous substance in at least one homogeneous material of the component exceeds the limit requirements specified in GB/T 26572-2011. However, it is extremely difficult to make product parts completely free of the above mentioned harmful substances under the current technical conditions. The design will be gradually improved as technology advances in the future.

9 ATTENTION

Ensure the product socket is well connected with plug. If not, the plug will be hot. Be sure to place and use the product on a firm, flat and horizontal surface. Do not place the product under air conditioner to prevent condensation water dropping into the product. Do not insert finger or other things into the air outlet/inlet to prevent physical damage or trouble. Ensure the product is unplugged before moving, cleaning, maintaining. Unplug the power connecting before moving the machine. Do not pull the wire to move the machine.

[Danger Warning] Key safety precautions

1. To avoid electric shock and fire, do not allow water, liquid or any flammable detergent to get into or to clean the product.
2. Do not spray any flammable materials such as pesticides or perfumes around the product.
3. Please keep a distance of more than 10cm from other items when the product is powered on to increase air convection and avoid damage to the product.
4. If abnormal (such as odor) is found, please turn off the power immediately, and repair or replace the product after sale. Do not repair by yourself to avoid danger.

[Safety Warning] Key safety precautions

Before connecting the power supply, please check whether the voltage of the product is consistent with the local power supply voltage.

If power cord is damaged, in order to avoid danger, it must be replaced by professional staffs.

Please stop using if the plug, power cord or product is damaged.

Keep the air inlet/outlet free from being blocked.

Do not insert foreign things into the machine.

Person with physical or mental disability, or without relevant experiences and skills (including children) should use it under guiding and instructing.