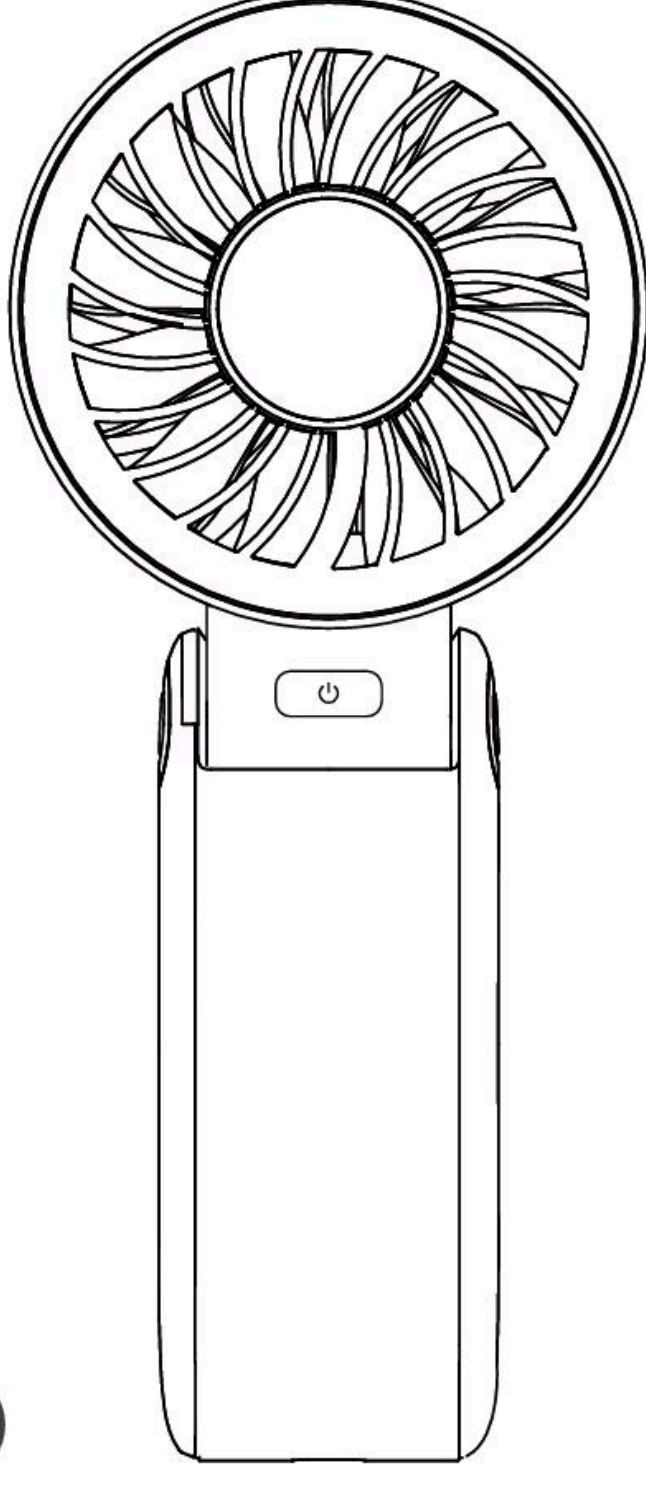


User Guide
Bedienungsanleitung
Manuel d'utilisation
Manuale
Manual de instrucciones
取扱説明書
الكتيب
Buku petunjuk
Manual de instruções
Kullanım Kılavuzu

Handheld Fan Life7(5000mAh)



English	01~08
Deutsche	09~16
Français	17~24
italiano	25~32
español	33~40
日本語	41~47
عربي	48~55
Bahasa Indonesia	56~62
Português	63~69
Türkçe	70~76

Please read this manual carefully before use. Be sure to use it in strict accordance with the requirements of the manual, and keep the manual properly for future use.

Bitte lesen Sie vor der Verwendung sorgfältig die Anleitung und verwenden Sie das Produkt gemäß den Anforderungen der Anleitung. Bewahren Sie die Anleitung zum späteren Nachschlagen.

Veuillez lire attentivement le manuel avant utilisation et utiliser le produit conformément aux instructions du manuel. Conservez le manuel pour référence ultérieure.

Si prega di leggere attentamente questo manuale prima dell'uso, utilizzare correttamente seguendo rigorosamente le istruzioni del manuale e conservare adeguatamente il manuale per uso futuro.

Antes de usar, lea cuidadosamente el manual y utilice el producto de acuerdo con las instrucciones del mismo. Guarde el manual para futuras consultas.

使用前にこの取扱説明書を注意深くお読みいただき、取扱説明書の要求事項に厳密に従って正しくご使用いただき、取扱説明書を適切に保存して後でご参照ください。

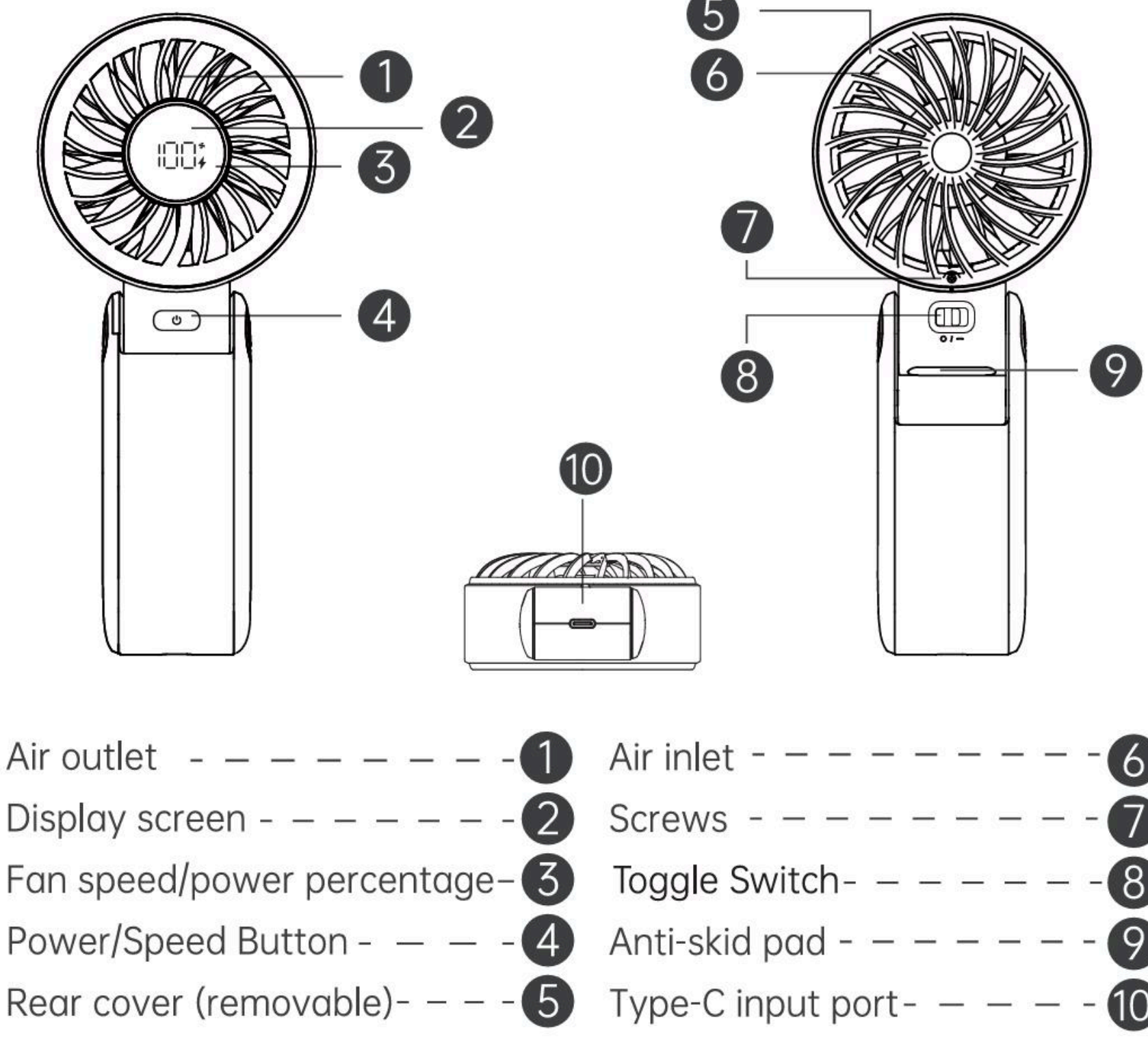
يرجى قراءة هذه التعليمات بعناية قبل استخدامها، مع التقيد الدقيق باشتراطات التعليمات، والاحتفاظ بها على نحو ملائم لاستخدامها في وقت لاحق.

Sebelum digunakan, harap baca petunjuk dengan cermat, gunakan sesuai dengan petunjuk, dan simpan petunjuk dengan baik untuk digunakan kemudian.

Antes de usar, leia atentamente este manual, use-o rigorosamente conforme as instruções e guarde-o bem para uso posterior.

Kullanmadan önce lütfen bu kılavuzu dikkatlice okuyun, kılavuzdaki talimatlara uygun olarak kullanın ve sonra kullanmak üzere kılavuzu iyi saklayın.

Appearance Description



Precautions Before Use

1. Please check the product and power cord for any damage and make sure they are in good condition and assemble them according to the instructions before powering them on.
2. Before charging the product, please check whether the voltage of the power supply used is consistent with the product label.
3. Please do not disassemble, modify or repair the product to avoid electric shock and fire accidents, and ask the service station designated by the original seller or manufacturer for repair.

01

Instructions for Use

A. Power Switch/Speed Adjustment

Short press the On-Off Key to cycle through the five-speed fan settings and power off; long press at any speed to turn off.

B. Display Screen Status



Operations/Status	Display Screen Content
Power On	Shows current battery level, switches to display fan speed after 5 seconds.
Adjusting Fan Speed	Displays current fan speed; switches back to charging display after 5 seconds during charging.
Battery Display	Power-off state: Double-click the button to show the current battery level, extinguishes after 5 seconds. Power-on state: Displays current battery level when turning on (switches to display current fan speed after 5 seconds); double-clicks to show current battery level when displaying fan speed (switches to display current fan speed after 5 seconds).
Unable to Start with Low Battery	Pressing the button, battery display shows 0%, battery icon flashes three times, then the screen extinguishes.
Low Battery Warning	When battery level is <10%, the battery icon continues to flash during fan speed mode, and the single-digit battery level and battery icon continue to flash during battery status mode.

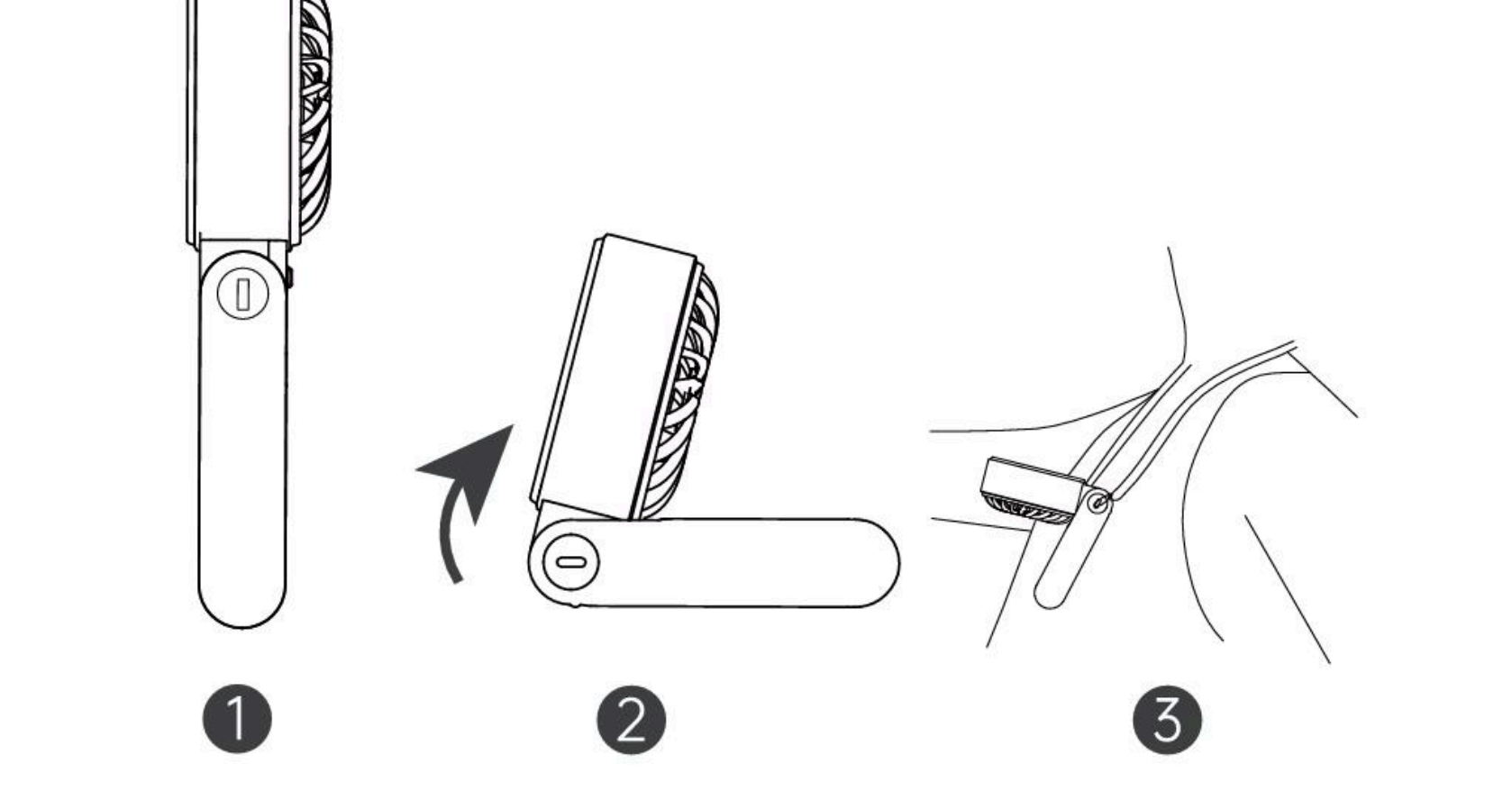
02

Charging	Single-digit battery level continues to flash; when displaying fan speed, the battery icon continues to flash.
Fully Charged	Battery level 100% stays on, battery icon stays on, and extinguishes after disconnecting power input.

Friendly reminder: When the battery is less than 15%, and you are using it while charging, only the first fan speed is available.

C. Fan Operation

1. Hold the handle for operation.
2. Rotate the mask to 100° and place it on the desktop for use.
3. Connect the fan to the hanging rope and wear it around the neck, directing the airflow towards the head and neck.



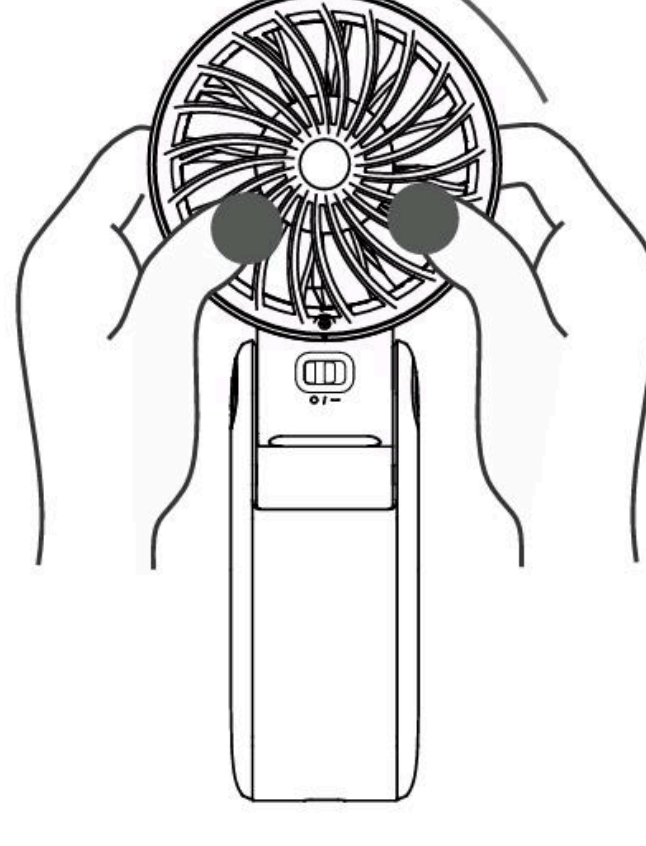
D. How to Clean

Removing the Rear Cover

Note: Before removing the rear cover, please turn off the power until the fan completely stops working.

Use a screwdriver to unscrew the screws beneath the rear cover, then rotate the rear cover counterclockwise until you hear a "click" sound to open it.

03

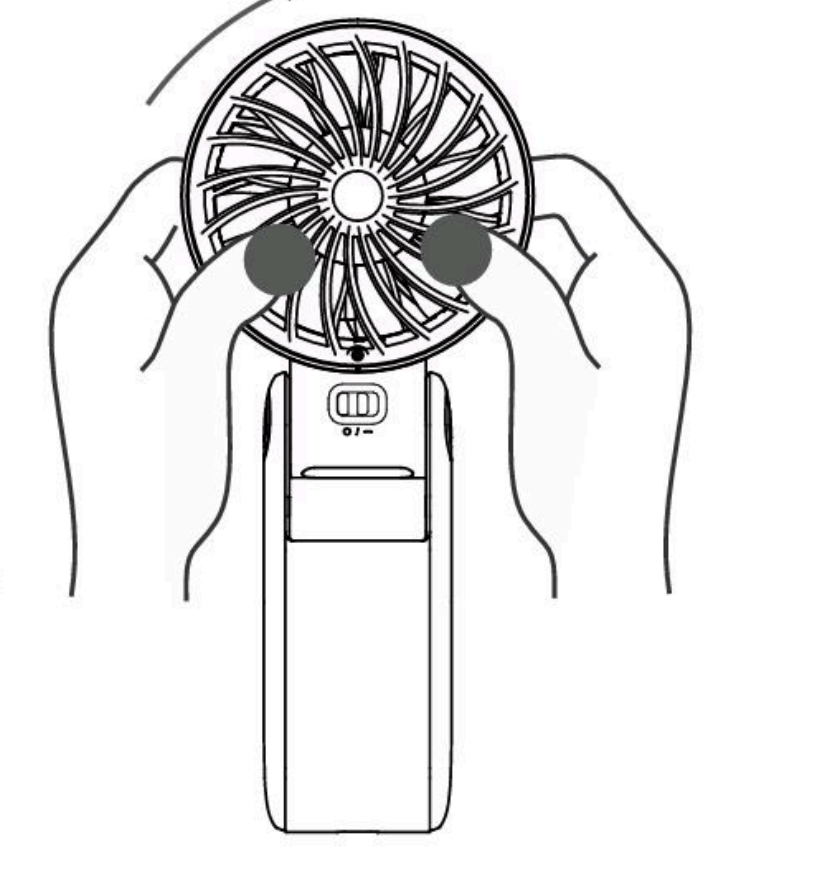


Cleaning and Maintenance

1. Before cleaning the product, ensure that the power has been disconnected.
2. The rear cover can be cleaned with water, and the fan blades and mask can be wiped with a clean cloth. After cleaning the mask, rear cover, and fan blades, let them air-dry completely before reinstalling for use.
3. Do not use water or other liquids to clean electrical components (such as the motor, power switch, etc.).
4. Avoid touching the power and electrical components with wet hands or a damp cloth.

Installing the Rear Cover

Hold the edge of the rear cover crossbar, insert it vertically downwards, hold the rear cover frame with both hands, rotate clockwise until you hear a "click" sound, then use a screwdriver to screw in the screws beneath the rear cover to complete the operation.

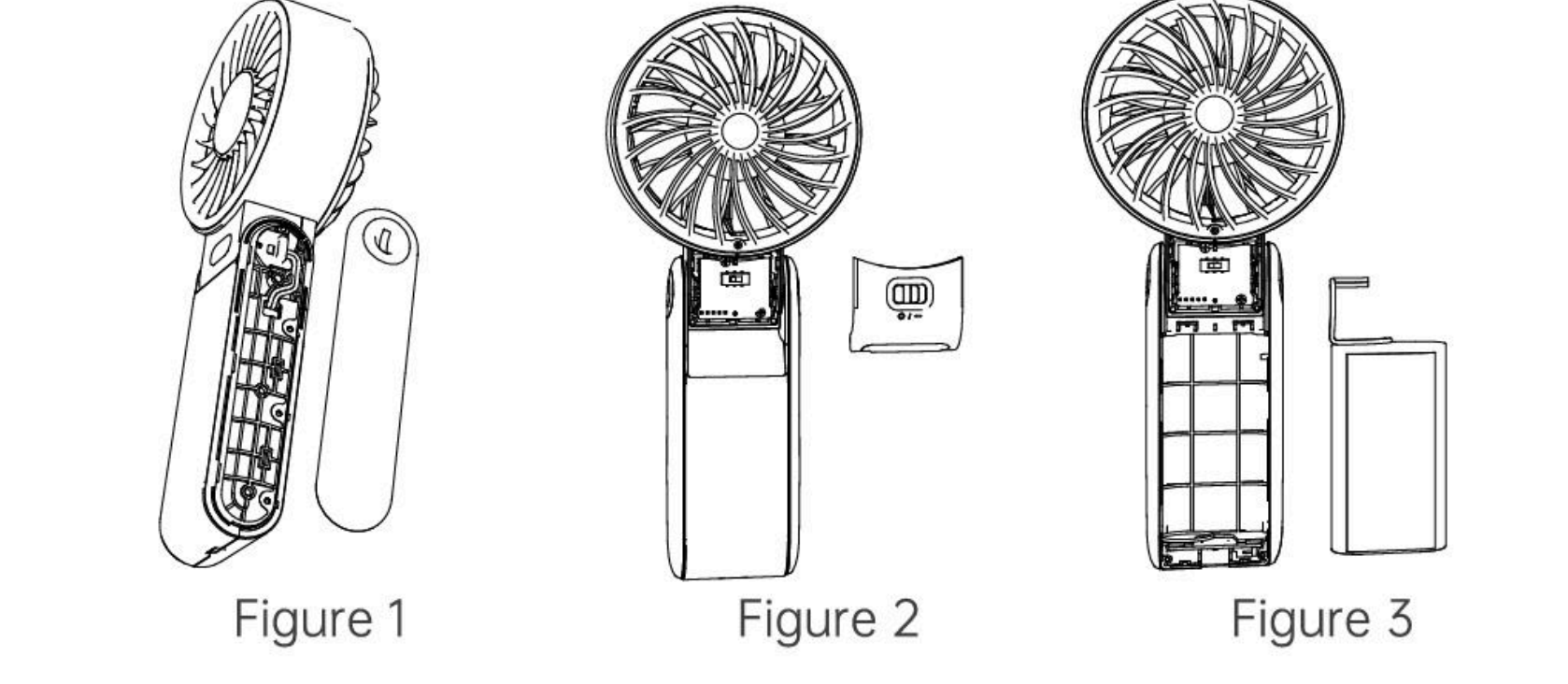


04

Removing the Battery

Before discarding the product, the battery must be removed. Ensure that the product is powered off before removing the battery. Dispose of the battery safely in accordance with local regulations.

1. Use tools to remove the left and right covers of the fan handle, unscrew the left and right screws (Figure 1).
2. Remove the anti-slip pad, unscrew the screws of the fan's head cover, and remove the head cover (Figure 2).
3. Use tools to pry open the back cover of the fan handle, unplug the power plug, and remove the battery for safe disposal in accordance with local regulations (Figure 3).



Safety Precautions

To ensure the safety of use and to avoid injury and property damage to you and others, please observe the following safety precautions; Incorrect use without observing the safety warnings may lead to accidents.

01. This product is not a child's toy, please ensure that infants and children do not play with this product as a toy; Children under 14 years of age, please use it under the supervision of a guardian.

05

02. This product is not intended for use by users (including children) with inadequate physiology, perception, mental ability, experience, or knowledge, unless used safely under the supervision or knowledge of a person responsible for their safety.
03. Please do not blow directly on the human body for a long time, especially the elderly and children, to avoid physical discomfort.
04. When using, please do not put fingers, sharp objects and metal objects, etc., which will cause product failure and the risk of electric shock, or injury.
05. When using, prohibit the use of wet hands, wet towels and other plugging power to avoid electric shock.
06. This product is not waterproof, please do not use water to directly rinse the product or in the bathroom, heavy moisture, water storage places to use; surface water, please dry in time to dry before trying to turn on the use; completely soaked and internal water into the prohibition of re-use.
07. Do not cover the air outlet and air inlet, such as hanging clothes, towels, clothes, and other items, so as not to cause product failure.
08. Prohibit the use and storage in high temperature (higher than 60 °C) environments and confined spaces, such as greenhouses, construction sites, fireplaces, exposed car rooms and other environments, which will cause plastic deformation, flame with the wind to cause fire, battery explosion and other failures and accidents.
09. Do not squeeze, disassemble the battery or place the battery in a high-temperature environment (60°C and above) for a long time, otherwise there may be a risk of liquid leakage or explosion.
10. If consumers use the power adapter to charge, the power adapter input rated voltage and current should be within 5.0V~2.0A, and the national mandatory safety certification before use.
11. This product uses lithium-ion battery, no memory function, overcharge or overdischarge will affect the service life of the product, please charge in time and disconnect the power after full charge, long time (more than 3 months) do not use please fully charge.

06

12. If there is smoke, fire and other failures in use, please immediately turn off the power to stop using, and send it to the dealer or manufacturer to deal with, do not disassemble themselves to avoid danger.
13. Do not bend or pull the power cord during charging to avoid poor contact.

Product Specifications

Brand: JisuLife
Product Name: Handheld Fan Life7
Product Model: Handheld Fan Life7
Input: 5.0V~2.0A
Battery Capacity: 5000mAh (18.5Wh/3.7V)
Battery: Lithium-ion Battery
Charging Time: 4-5 hours
Working Time: 3.5-19.5 hours (depending on different speed/settings and usage scenarios)
Product Weight: Approximately 250g
Product Dimensions: 84×42×193 mm

Package Accessories

Handheld Fan Life7 * 1
USB-C Charging Cable * 1
Lanyard * 1
User Manual * 1

The content of this manual and the specifications of the product are subject to change without prior notice.

07

FC This device complies with Part 15 of the FCC Rules. Operation is subject to the following two conditions:(1) this device may not cause harmful interference, and (2) this device must accept any interference received, including interference that may cause undesired

"NOTE: This equipment has been tested and found to comply with the limits for Class B digital device, pursuant to part 15 of the FCC Rules. These limits are designed to provide reasonable protection against harmful interference in a residential installation. This equipment generates, uses and can radiate radio frequency energy and, if not installed and used in accordance with the instructions, may cause harmful interference to radio or television reception, which can be determined by turning the equipment off and on, th user is encouraged to try to correct the interference by one or more of the following measures:

- Reorient or relocate the receiving antenna.
- Increase the separation between the equipment and the receive
- Connect the equipment into an outlet on a circuit different from that to which the receiver is connected.
- Consult the dealer or an experienced radio/TV technician for help."

08