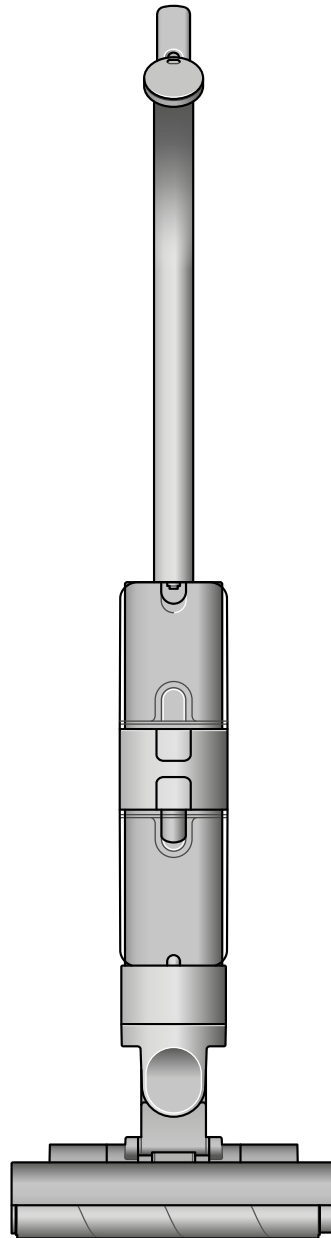


dyson washG1

Dyson WashG1 Logo.

User manual

Dyson WashG1 machine
showing cleaner head.



Contents

In the box

Download the MyDyson™ app

Getting started

The LCD Screen

Quick start

Regular maintenance:

Self-clean cycle

Washing the Dirty water tank

Washing the Debris tray

Washing the rollers

Washing the Debris brush bars

Washing the Clean water tank

Cleaning the Dock

Replacing the rollers

Replacing the Debris brush bars

Disassembling your machine

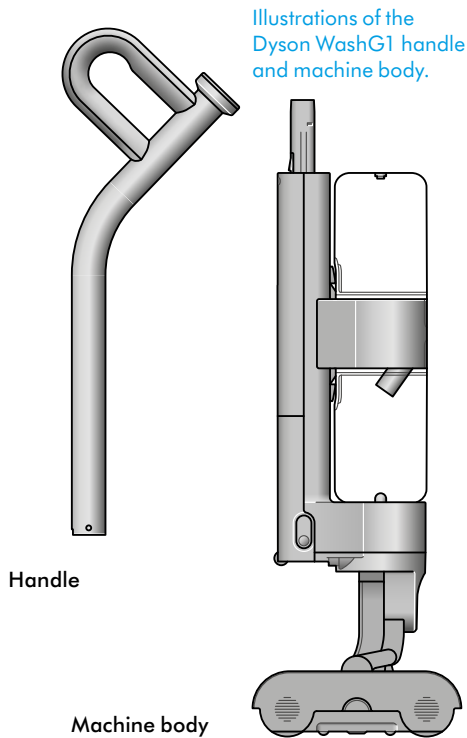
Looking after your machine

In the box

Your machine is boxed in two parts:

1. Machine body.
2. Handle.

Simply attach the handle to the main body.



Wet cleaner with click-in battery



Diagram of machine charger.

Charger

One-piece charger with plug, connector and cable. Charges your machine with or without a dock.

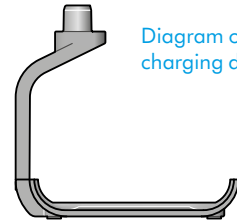


Diagram of machine charging dock.

Charging dock

Dyson WashG1™ wet cleaner charges on the dock, ready for your next clean.

Our recommendation

Keep the charging jacks (on the charger and charging dock) away from conductive materials such as carbon fibre.

Disconnect the charger from the mains before cleaning.

Download the MyDyson™ app

Download the MyDyson™ app from the App Store or Google Play. Open the app and follow the on-screen instructions to create a new account.

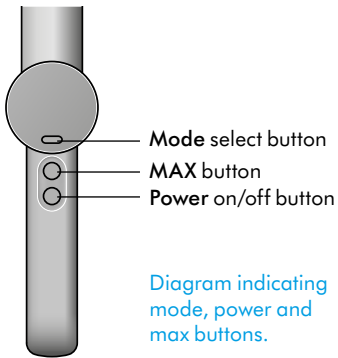


Apple and the Apple logo are trademarks of Apple Inc., registered in the U.S. and other countries. App Store is a service mark of Apple Inc., registered in the U.S. and other countries. Google Play and the Google Play logo are trademarks of Google Inc.

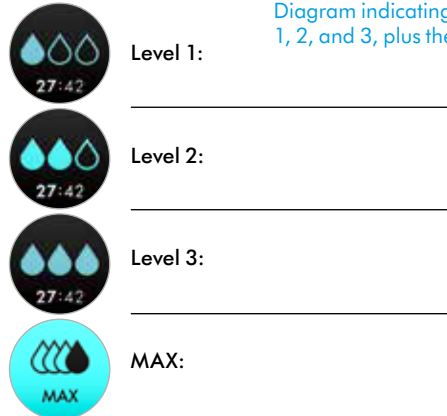
Logos of Dyson, App store and Google Play.

Getting started

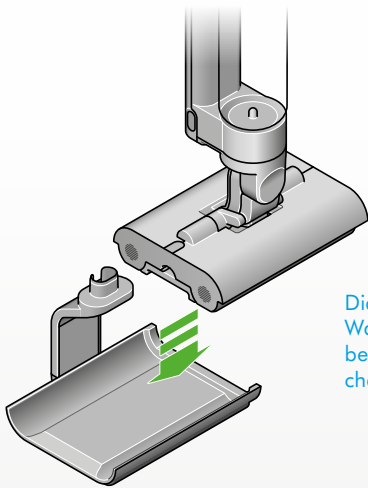
Get to know your machine controls



Hydration modes



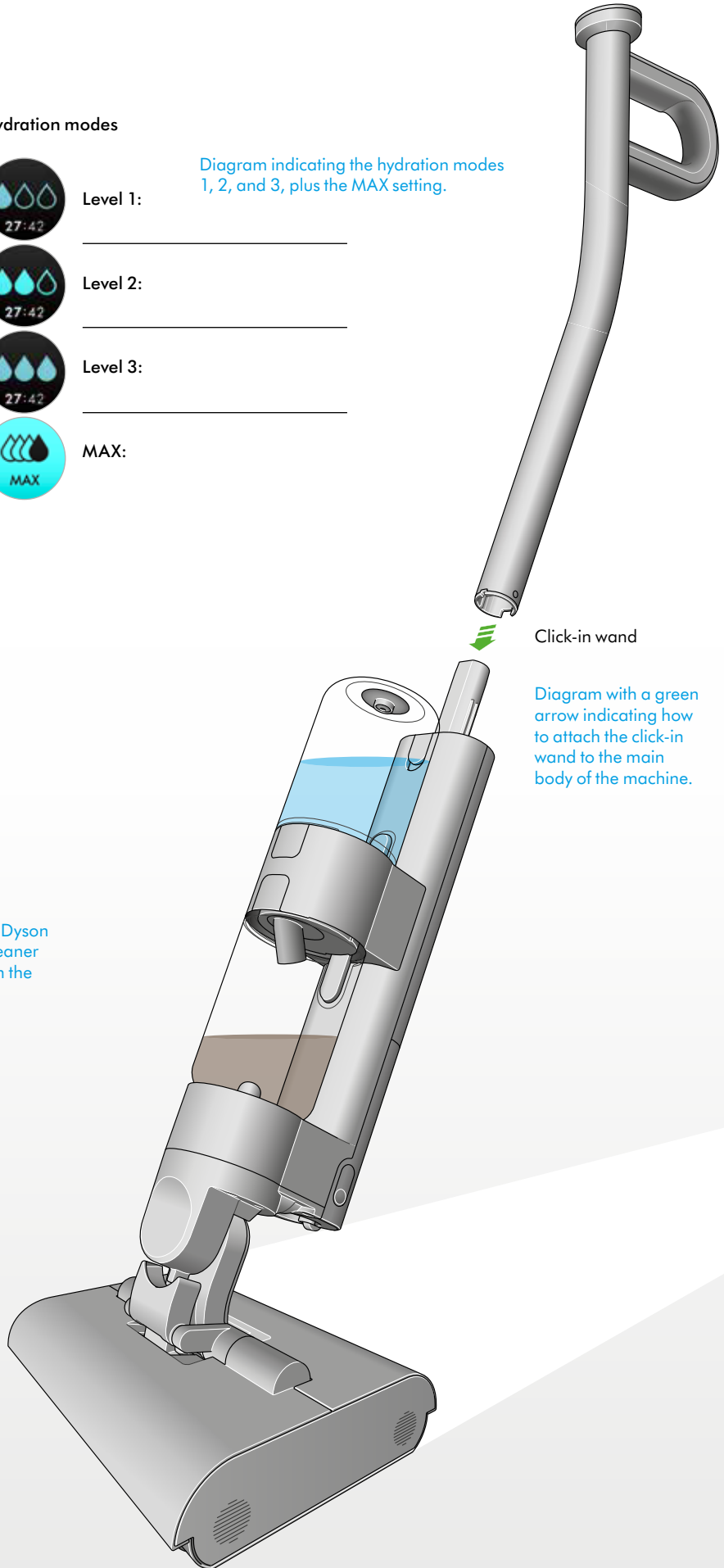
Before use Charge on dock



Fill the clean water tank.



Illustration of the Clean water tank being filled under a tap.



The LCD screen





The LCD screen displays helpful performance information such as the selected hydration mode, remaining run time and essential maintenance alerts.

Cleaning

Use the Mode button to select your hydration level. Press start to begin cleaning.

Choose the hydration mode to suit the task:

Water droplet icons indicate Dyson WashG1™ wet cleaner hydration modes: 1, 2 and 3.

<p>Level 1 For debris, hair and light spills. Single water drop icon indicating hydration level one.</p>		<p>Level 2 For mealtime mess, spills and wet footprints. Double water drop icon indicating hydration level two.</p>	
<p>Level 3 For sticky spills, muddy boot marks and dried-on stains. Triple water drop icon indicating hydration level three.</p>		<p>MAX For extra hydration on stubborn stains. Black water drop icon on top of three empty water drop icons indicating the max hydration setting.</p>	

Alerts

When your Dirty water tank is full, you will be prompted with the alert: **Empty dirty water tank**.



Exclamation mark inside a triangle icon indicating the alerts notification.

Replacement rollers

We recommend replacing Dyson WashG1™ wet cleaner rollers at around 6 months, depending on usage. The machine will alert you when they need to be changed – and display a QR code for ordering replacements. When fitting new rollers, reset the lifetime counter.



Roller replacement alerts including a QR code to scan and shop for replacement rollers.

Runtime

The LCD screen constantly displays the machine's remaining run time underneath the water droplet icon – so you'll always know how much cleaning time you have left.



Run time alert indicating low remaining run time and low battery.

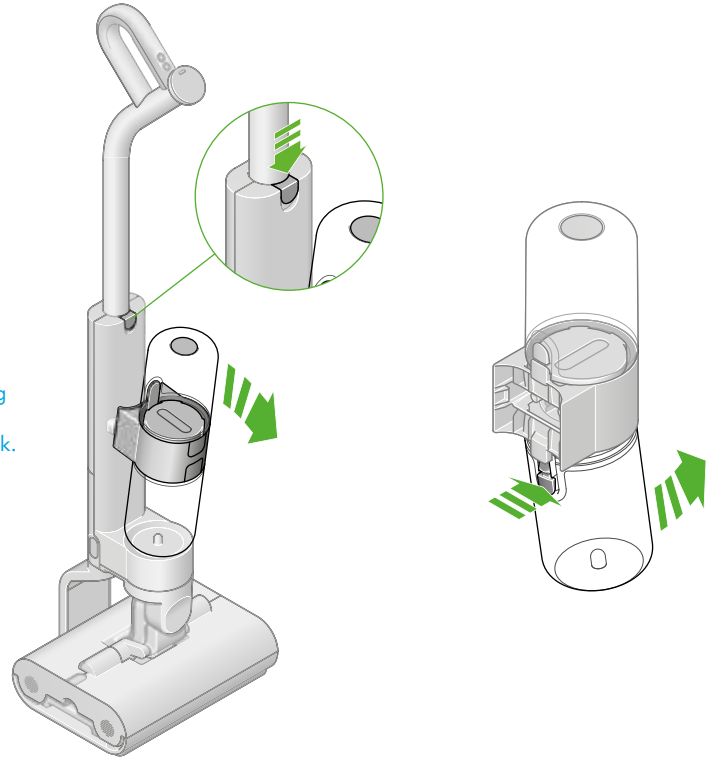
Your Dyson WashG1™ wet cleaner runs on a click-in battery with up to 35 minutes of run time. To extend your cleaning time, you can order an extra click-in battery at www.dyson.com

Quick start

Remove the Clean water tank

Press the release button and lift the tank assembly away from the machine. Remove the Clean water tank from the tank collar.

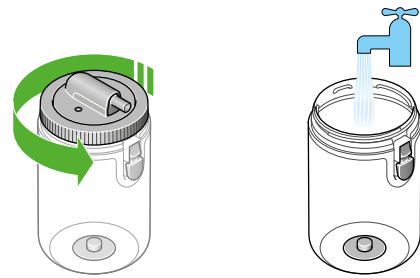
Two diagrams with green arrows indicating the direction of release for the Clean water tank.



Fill the Clean water tank

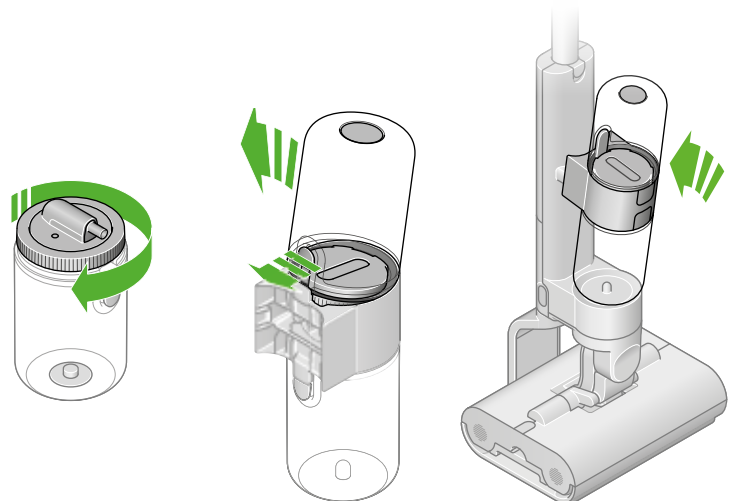
Open the Clean water tank by twisting the lid anti-clockwise. Fill with clean water to the MAX line on the side of the tank.

Diagram with green arrow indicating the direction of twisting to open the lid on the Clean water tank and a second showing the Clean water tank being filled under a tap.



Close and replace the Clean water tank

Close the lid. Replace the Clean water tank onto the tank collar. Reconnect the tank assembly to the body of the machine.



Allow rollers to fully hydrate

On first use, the new rollers will take approximately 5 minutes to reach full and even hydration.

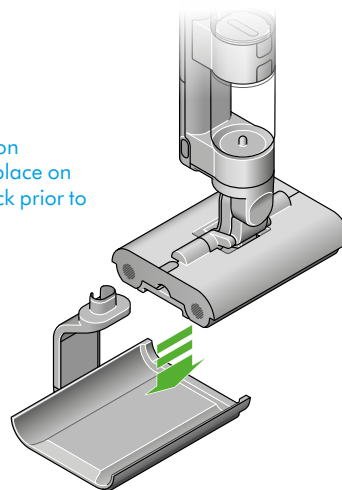
Three sequential diagrams demonstrating closing and replacing the Clean water tank back onto the machine.

Regular maintenance:

Self-clean cycle

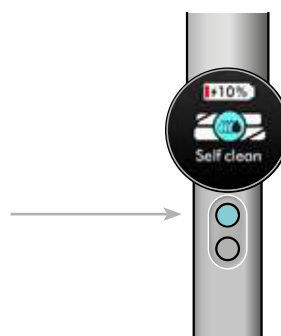
Dyson WashG1™ wet cleaner self cleans on the dock while charging. Place on the dock, and make sure the charger is connected.

Diagram of Dyson WashG1 being place on the charging dock prior to self cleaning.



Using the menu button, scroll to Self clean using the blue button and select start.

Dyson WashG1™ wet cleaner will now self-clean its entire system, for 140 seconds, leaving it refreshed and ready for your next clean.



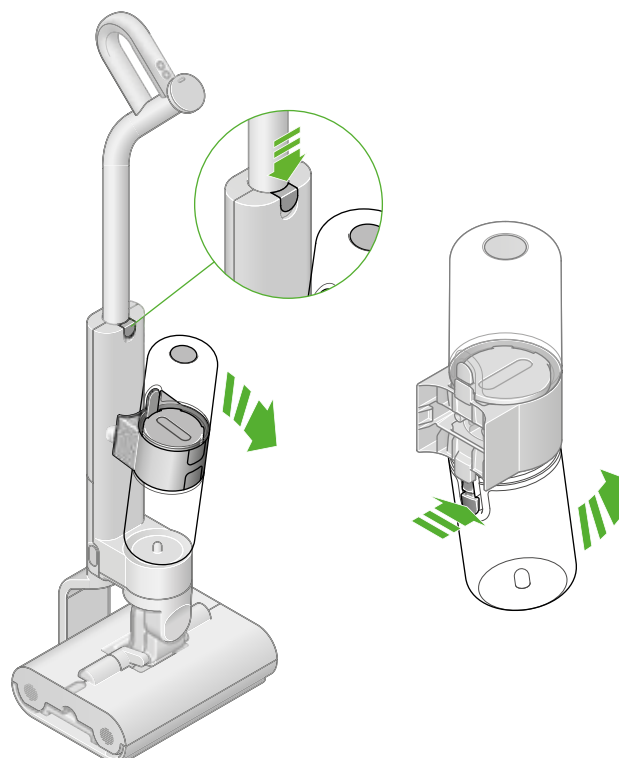
The menu button on the LCD screen.

Washing the Dirty water tank

Remove the tank assembly

Press the release button to remove the tank assembly from the product. Remove the Dirty water tank from the tank collar.

Diagram with green arrows illustrating how to remove the Dirty water tank.

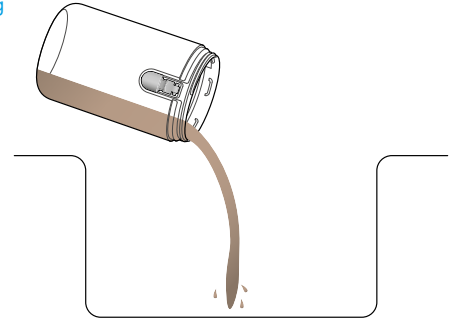


Regular maintenance:

Two sequential diagrams demonstrating opening the Dirty water tank lid and pouring the contents into the sink.

Open the Dirty water tank

Turn the lid anti-clockwise to open the Dirty water tank. Empty the Dirty water into the sink.



Clean the Dirty water tank

Wash the Dirty water tank in a sink, using warm water, detergent and a cloth.

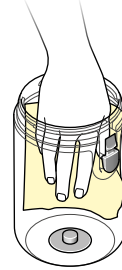


Diagram of a hand wiping out the inside of the Dirty water tank with a cloth.

Open the Float Assembly

Rotate and remove the Float Assembly from the Dirty water tank lid.

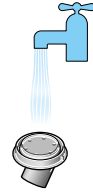
Clean the Float Assembly

Wash the Float Assembly in a sink, using warm water, detergent and a cloth. Run clean water onto the Lid Assembly to remove debris from the filter.

The float assembly rotating.



The float assembly being rinsed under a tap.



Soak filter every six months

We recommend cleaning the filter inside the Dirty water tank lid, every six months, to remove limescale. To access the filter mesh, open the lid Float Assembly a quarter turn. Soak the mesh in citric acid/vinegar for one hour; this will counter limescale build up.



Soaking in vinegar to counter limescale build up.

Replace the Float Assembly

Attach the Float Assembly to the Dirty water tank lid.



Two sequential diagrams showing how to replace the float assembly.



Replace the Dirty water tank

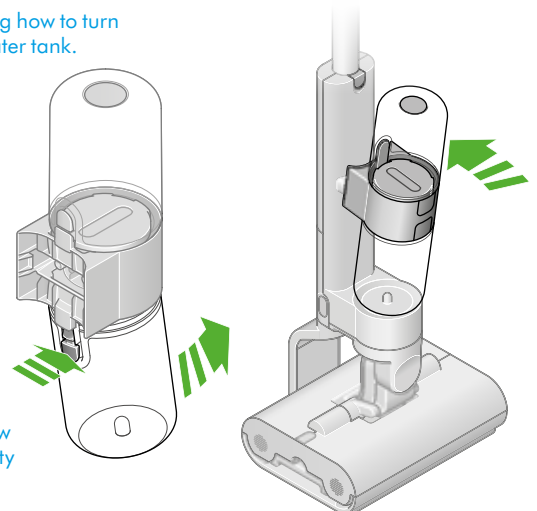
Turn the lid clockwise to close.

Reassemble the Dirty water tank

Reconnect the empty Dirty water tank onto the body of the machine.



Diagram showing how to reassemble the Dirty water tank.



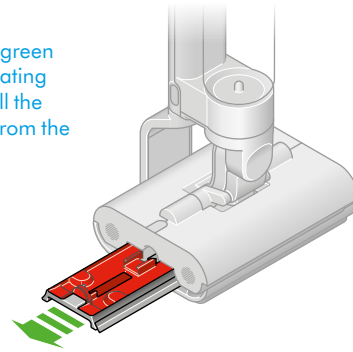
Regular maintenance:

Washing the Debris tray

Remove the Debris tray

Slide the tray from the machine.

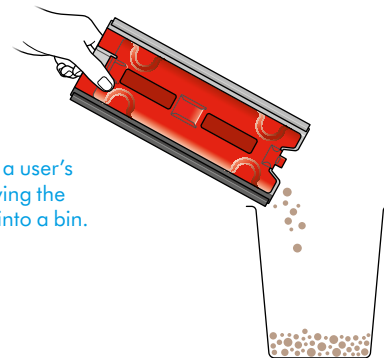
Diagram with a green arrow demonstrating which way to pull the Debris tray out from the cleaner head.



Empty the tray

Take the tray to the bin and dispose of the solid debris. Tap the tray on the side of the bin to dislodge any remaining debris.

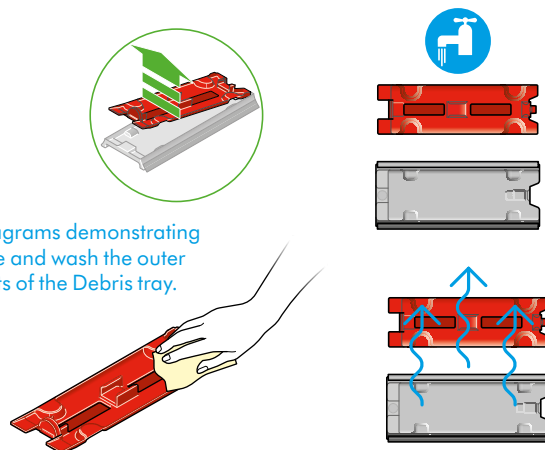
Diagram of a user's hand emptying the Debris tray into a bin.



Remove and wash the tray

Rinse the tray in a sink. Remove the red filter material and wash with a cloth, in warm water and detergent, to remove any remaining dirt.

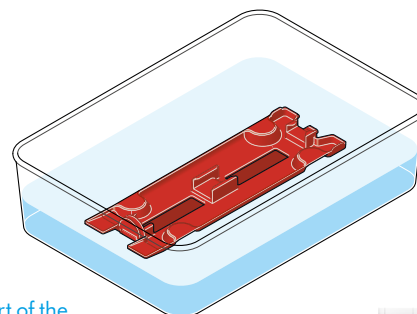
Sequential diagrams demonstrating how to remove and wash the outer and inner parts of the Debris tray.



Soak filter every six months

We recommend cleaning the filter inside the Debris tray, every six months, to remove limescale. Soak the mesh in citric acid/vinegar for one hour; this will counter limescale build up.

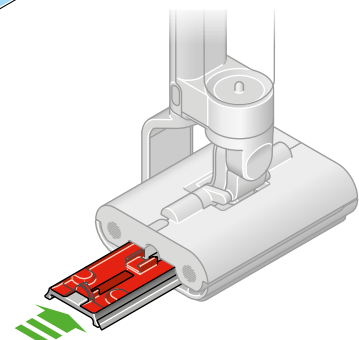
The red inner part of the Debris tray soaking in citric acid or vinegar.



Reassemble

Slide the tray back into the machine.

Diagram showing the Debris tray being slid back into the cleaner head.

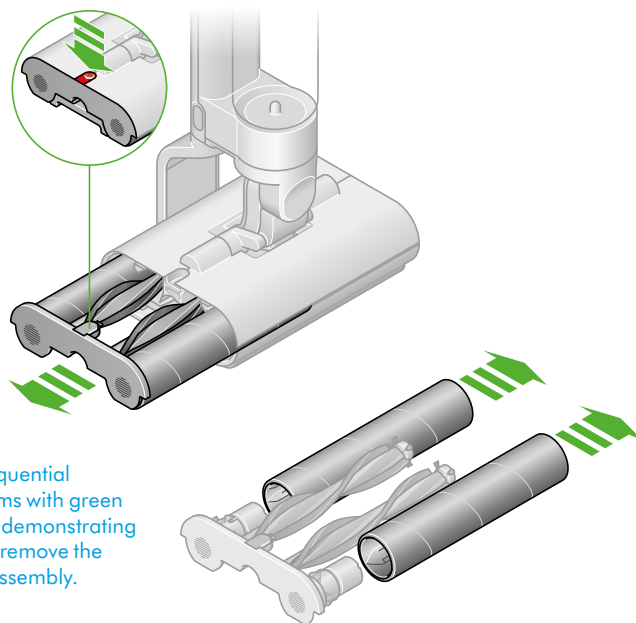


Regular maintenance:

Washing the rollers

Remove the rollers

Press the red release catch to slide out the roller assembly – and simply detach the rollers.

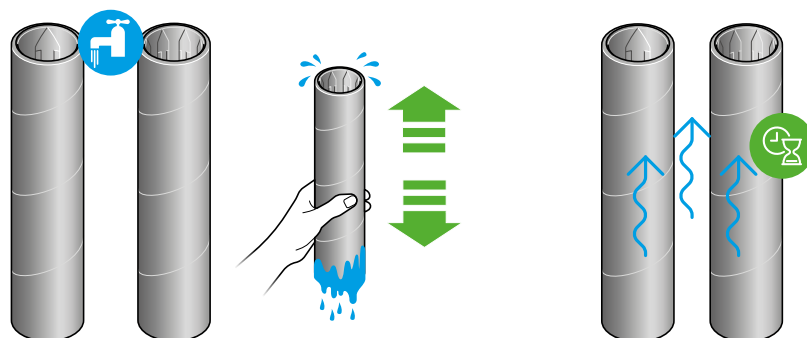


Two sequential diagrams with green arrows demonstrating how to remove the roller assembly.

Wash the rollers

Wash the rollers in a sink, using warm water and detergent. Squeeze rollers to remove excess water and leave to dry. Replace the rollers to the end cap.

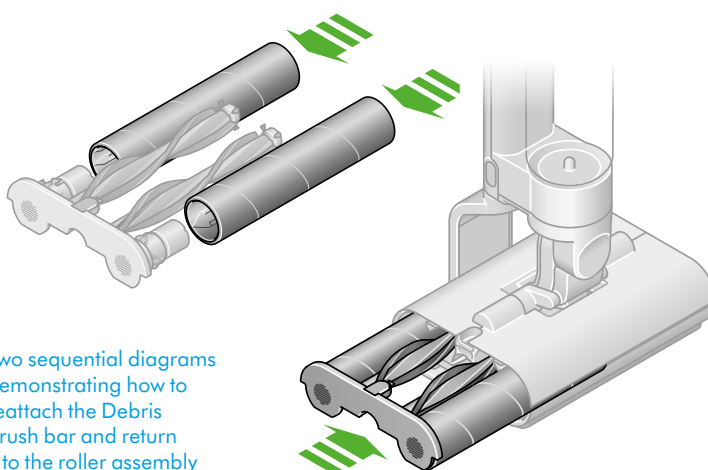
Two sequential diagrams demonstrating how to hand wash the rollers and leave to dry thoroughly.



Reattach the rollers

Slide the rollers and Debris brush bar into the cleaner head until the end cap clicks.

Two sequential diagrams demonstrating how to reattach the Debris brush bar and return it to the roller assembly and machine.



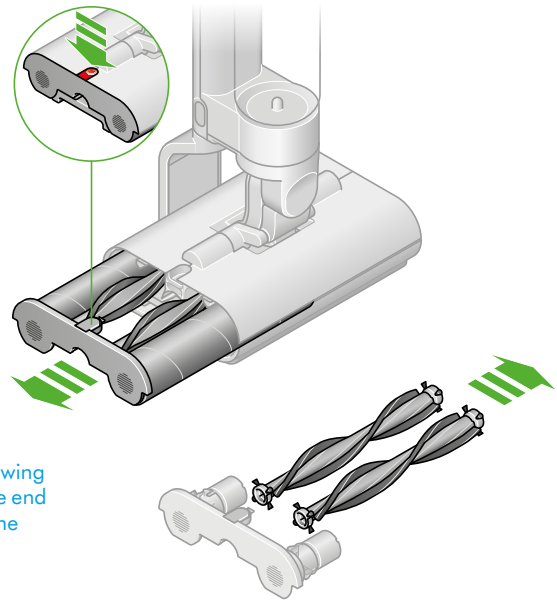
Regular maintenance:

Washing the Debris brush bars

Remove the Debris brush bars

Pop out the end cap.

Remove the Debris brush bar from the end cap.



Green arrows showing how to pop out the end cap and remove the Debris brush bar.

Remove debris

Use scissors to cut any hair wrapped around the Debris brush bar.

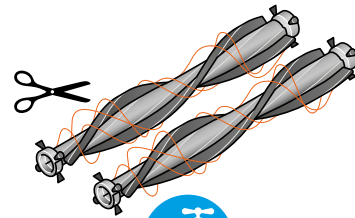
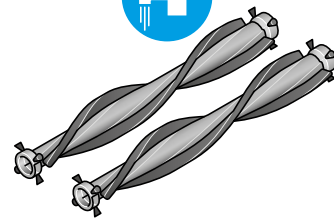


Diagram of scissors cutting hair from the Debris brush bar.

Wash the Debris brush bar

Wash the Debris brush bar in a sink, using a cloth, warm water and detergent.



Wipe the underside of the cleaner head with a damp cloth and detergent.

Diagram of wiping the underside of the cleaner head with a damp cloth.

Reattach the Debris brush bar

Reattach the Debris brush bar to the end cap.

Slide the rollers and Debris brush bar into the cleaner head until the end cap clicks.

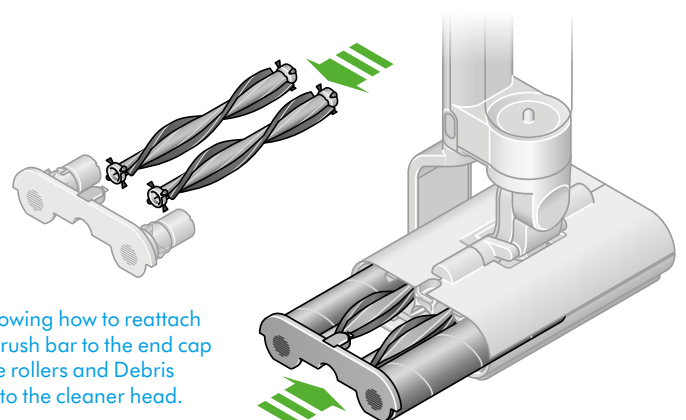


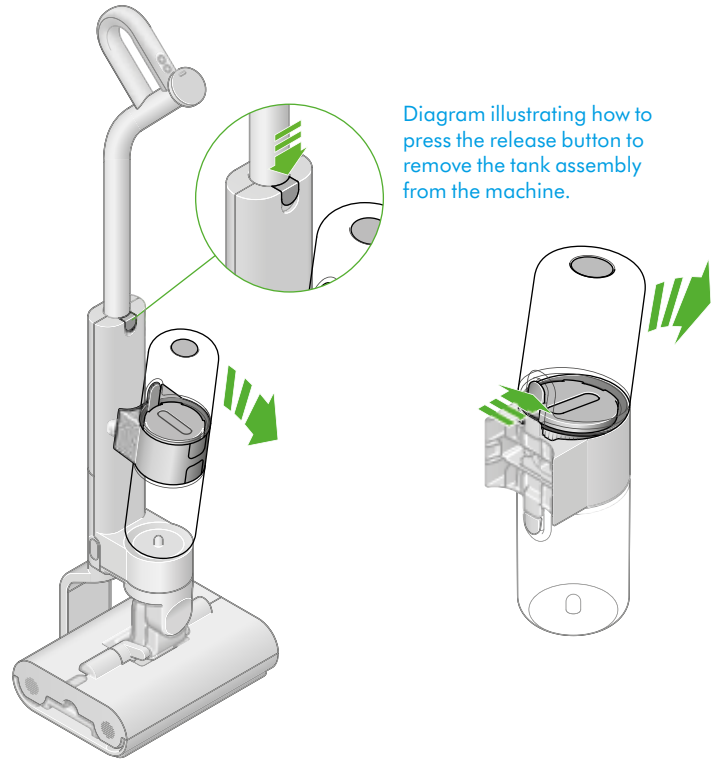
Diagram showing how to reattach the Debris brush bar to the end cap and slide the rollers and Debris brush bar into the cleaner head.

Regular maintenance:

Washing the Clean water tank

Remove the tank assembly

Press the release button to remove the tank assembly from the machine. Remove the Dirty water tank from the tank collar.



Open the Clean water tank

Turn the lid anti-clockwise to open the Clean water tank.

Clean the Clean water tank

Wash the Clean water tank in a sink, using warm water, detergent and a cloth.

Soak filter every six months

We recommend cleaning the filter in the Clean water tank, every six months, to remove limescale. Soak the mesh in citric acid/vinegar for one hour; this will counter limescale build up.

Replace the Clean water tank

Close the lid of the Clean water tank by turning it clockwise.

Reassemble the Clean water tank

Reconnect the empty Clean water tank onto the body of the machine.

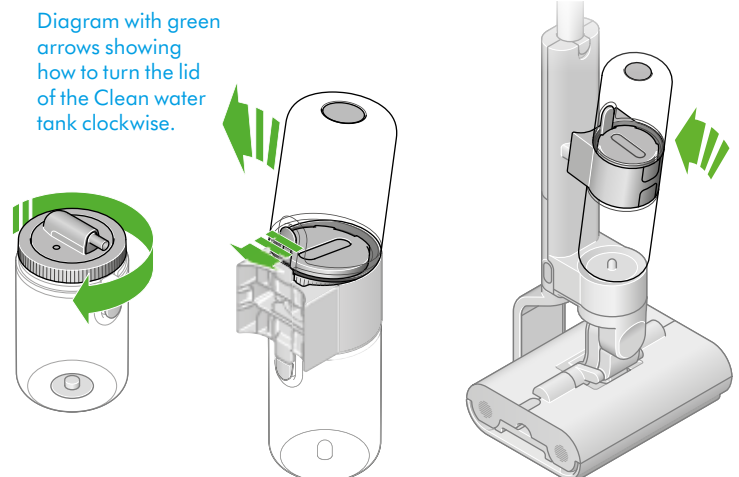
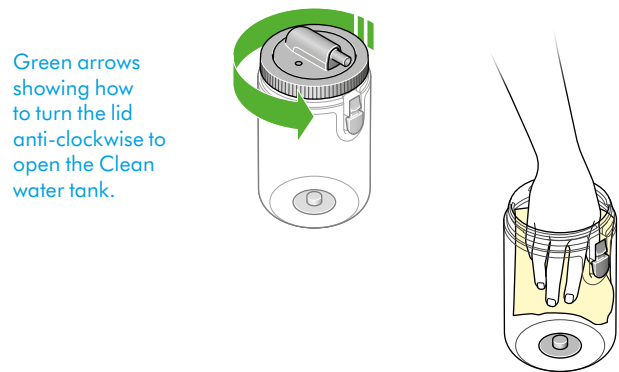


Diagram with green arrows showing how to reassemble the clean water tank.

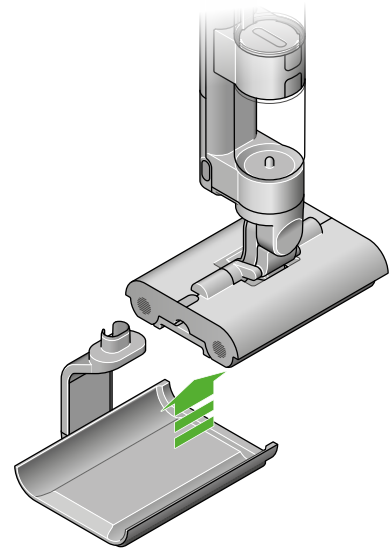
Regular maintenance:

Cleaning the dock

Remove the machine from the Dock

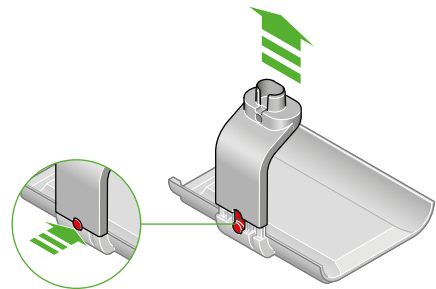
Press the release button on the rear of the Dock and lift off the charging post.

Illustration of the lifting the charging post from the dock.

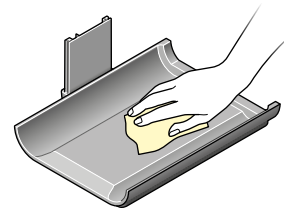


Clean the Dock tray

Make sure the charger is disconnected from the mains before cleaning. Wipe over with warm water, detergent and a cloth.



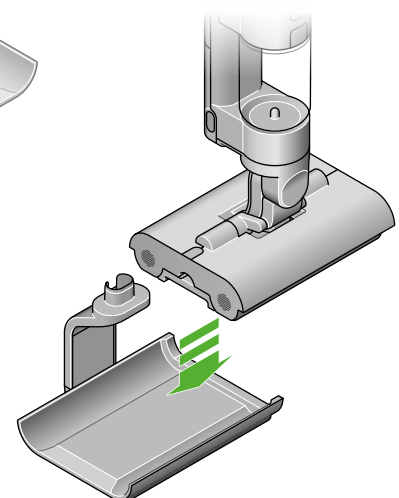
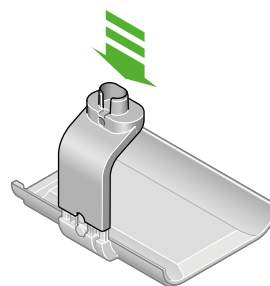
Green arrows highlighting the charger disconnected from the mains before cleaning.



Replace the Dock tray

Replace the charging post onto the Dock.
Replace the machine on the Dock.

Two sequential diagrams showing how to replace the charging post onto the dock.



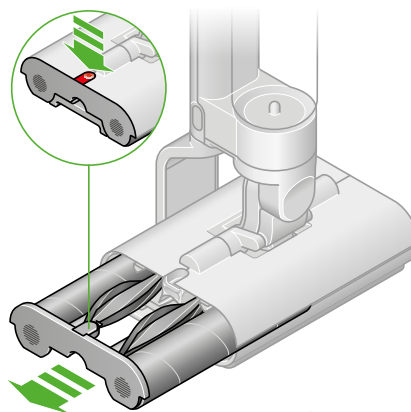
Regular maintenance:

Replacing the rollers

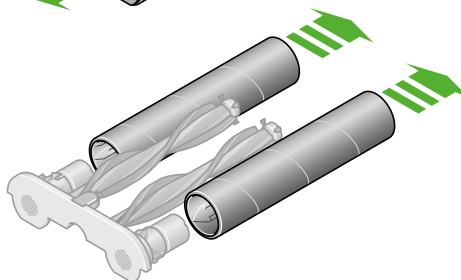
Remove the rollers

Pull out the end cap with the roller and Debris brush bar.
Remove the rollers from the end cap.

Diagram with an inset demonstrating removing the rollers from the end cap.

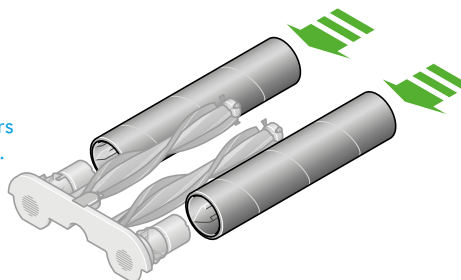


Dispose of used rollers into your bin



Fit new rollers onto the end cap

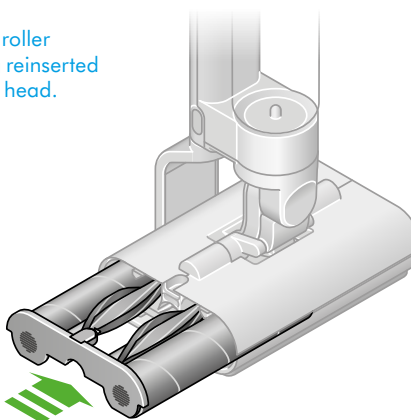
Diagram depicting new rollers being fitted onto the end cap.



Reattach the roller

Slide the roller and Debris brush bar into the cleaner head until the end cap clicks.

Diagram of the roller assembly being reinserted into the cleaner head.



Check the lifespan of your rollers

Your Dyson WashG1™ wet cleaner rollers have a lifespan of 25 hours. The machine will alert you when they need to be changed – and display a QR code for ordering replacements.

A replace rollers alert on the LCD display together with a QR code and roller life monitor screen.



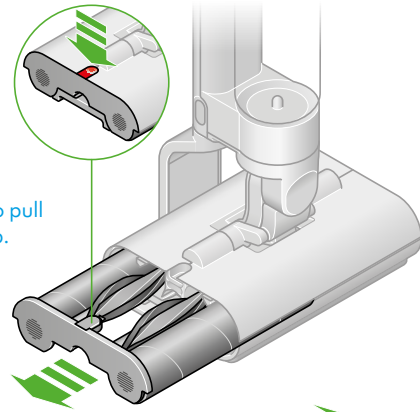
Regular maintenance:

Replacing the Debris brush bars

Remove the rollers

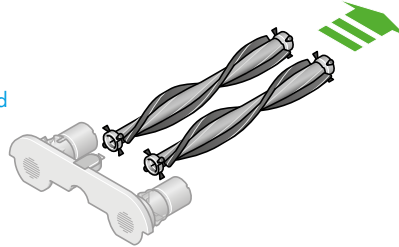
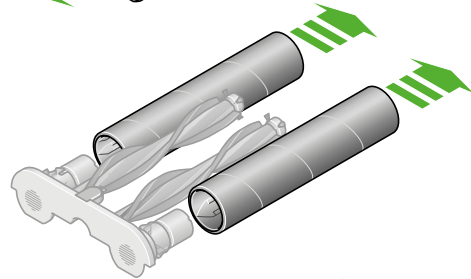
Pull out the end cap with the roller and Debris brush bar.
Remove the from the end cap.

Green arrows showing how to pull out the end cap.



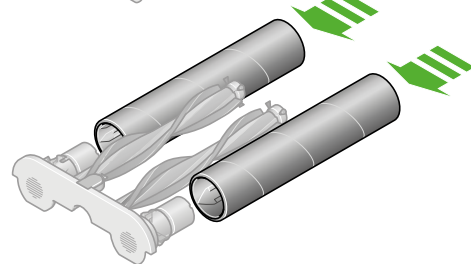
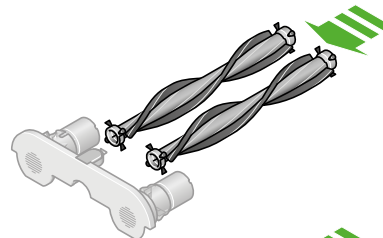
Dispose of used Debris brush bars into your bin

Diagram of the Debris brush bars being removed before disposal.



Fit new Debris brush bars onto the end cap

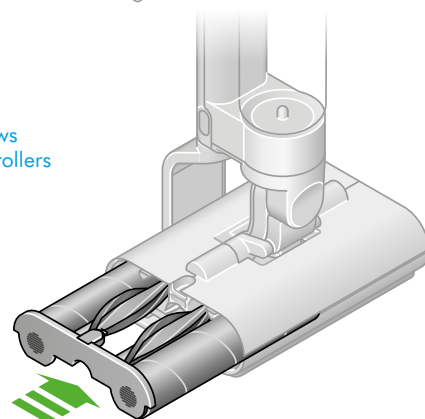
Diagram of replacement Debris brush bars being fitted to the end cap.



Reattach the rollers

Slide the Debris brush bars and rollers into the cleaner head until the end cap clicks.

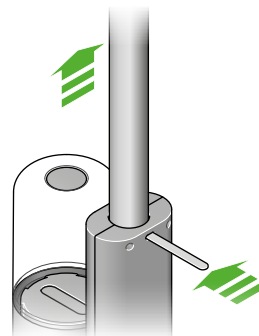
Diagram with green arrows showing how to slide the rollers back into position.



Disassembling your machine

Should you need to store or repackage your machine, detach the wand from the main body, as shown opposite.

Diagram indicating where to separate the wand from the body.



Looking after your machine

Day-to-day machine care

To get the best performance from your machine, it's important to clean it regularly.

If your machine is dusty, wipe with a damp lint-free cloth.
Empty both water tanks after each use, and wipe clean.
Empty the Debris tray into a bin, after every use, and rinse clean.

Battery health

For best performance and battery life, use MAX setting only for spot cleaning tough stains.

Your battery is designed to charge on the dock, so return the machine to the dock after use, to help maintain battery life.

Where to find your machine's serial number

The serial number is printed on the main body of the machine, behind the battery pack.

Use the serial number to register your machine.

For more information and support videos for your machine, go online: <https://www.dyson.com.sg/dyson-support>